



Week ending 23 May 2021

Issue 1254

A weekly review of New Zealand electricity markets compiled by Energy Link Ltd

**Prices:**

South Island	BEN			ISL		
	23-May-21	16-May-21	Change	23-May-21	16-May-21	Change
Average Prices	241.24	240.86	⇒ 0%	258.30	257.97	⇒ 0%
Ratio Day/Night	1.15	1.15	⇒ -1%	1.16	1.16	⇒ -1%
Ratio Week/Other Day	0.89	1.14	↓ -21%	0.90	1.14	↓ -22%

**Key (Week Difference)**

↑	>=	10%
↗	>=	5%
⇒	>=	0%
↘	<=	-5%
↓	<=	-10%

North Island	HAY			OTA		
	23-May-21	16-May-21	Change	23-May-21	16-May-21	Change
Average Prices	245.93	243.51	⇒ 1%	260.37	250.90	⇒ 4%
Ratio Day/Night	1.18	1.20	⇒ -1%	1.24	1.24	⇒ 0%
Ratio Week/Other Day	0.89	1.15	↓ -22%	0.89	1.16	↓ -24%

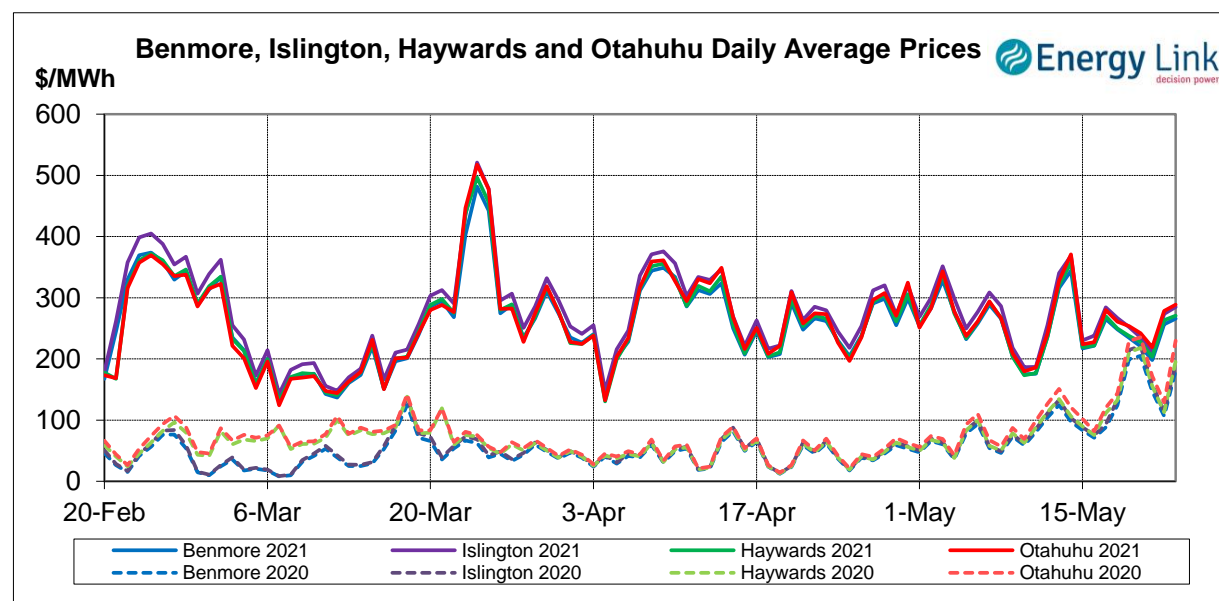
Price Differences	OTA-BEN			HAY-BEN		
	23-May-21	16-May-21	Change	23-May-21	16-May-21	Change
Average differences	19.13	10.04	↑ 91%	4.69	2.65	↑ 77%

All Prices are Final Prices

**Price Highlights:**

	Price \$/MWh	Day	Location	Period
Maximum nodal price	\$1,750.07	Thursday, 20 May 2021	Tuai	16
Minimum nodal price	\$0.00	Monday, 17 May 2021	Linton	01
Maximum Ben_Hay differential	\$22.87	Sunday, 23 May 2021		36
Maximum NI reserve price	\$34.17	Saturday, 22 May 2021		16

Please note: Any Provisional Prices are not included in Price Highlights



Subscribe at [www.energylink.co.nz/publications](http://www.energylink.co.nz/publications)

### Average Wholesale Spot Prices

Date	Benmore (\$/MWh)		Islington (\$/MWh)		Haywards (\$/MWh)		Otahuhu (\$/MWh)	
	Day	Night	Day	Night	Day	Night	Day	Night
23/05/2021	268.86	259.04	290.15	274.55	276.99	258.46	302.04	262.34
22/05/2021	276.94	215.73	296.12	227.87	285.59	218.94	305.88	223.22
21/05/2021	212.94	168.35	227.17	179.08	220.41	168.87	239.59	178.40
20/05/2021	218.57	224.34	233.02	239.84	228.13	226.69	247.08	231.50
19/05/2021	246.14	211.54	264.74	226.34	251.77	208.45	272.90	214.48
18/05/2021	270.67	203.06	291.79	217.28	274.40	199.71	289.80	203.70
17/05/2021	270.11	255.48	290.72	271.93	277.67	253.47	291.80	255.91

Note: Night: 00:00 – 08:00 and Day 08:00 – 24:00

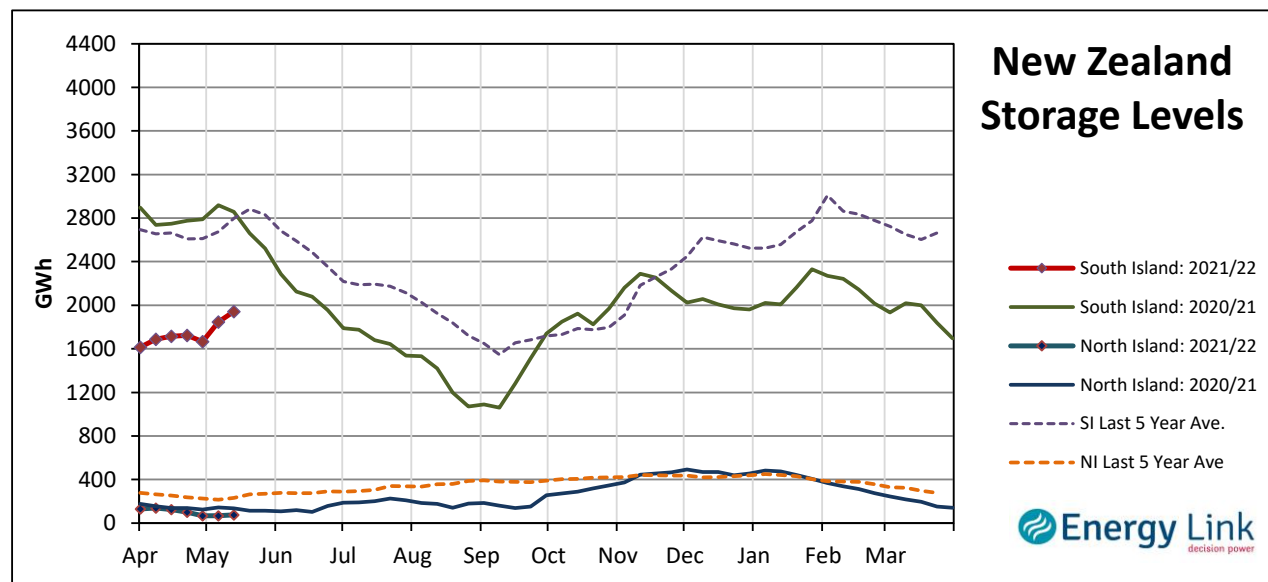
Indicator (\$/MWh)	Benmore	Movement	Islington	Movement	Haywards	Movement	Otahuhu	Movement
Average April 21 Price	261.18	-	279.38	-	263.43	-	268.69	-
Average May 21 Price	250.69	-	268.35	-	253.83	-	260.92	-
4 Week Moving Average Price	255.23	-0.3%	273.21	-0.2%	258.57	-0.1%	265.57	0.8%
Weekly Average Price	241.24	0.2%	258.30	0.1%	245.93	1.0%	260.37	3.8%
Weekday Day Average Price	243.69	-6.5%	267.35	4.2%	250.48	-6.4%	268.23	-4.2%
Weekday Night Average Price	212.55	-6.2%	231.32	16.1%	211.44	-5.1%	216.80	-2.8%
Weekend Day Average Price	272.90	18.5%	261.65	-13.0%	281.29	21.1%	303.96	27.5%
Weekend Night Average Price	237.38	19.9%	203.48	-31.5%	238.70	21.4%	242.78	21.5%
Day - Night Differential	1.15	-0.5%	1.16	-0.6%	1.18	-1.1%	1.24	0.2%
Weekday - Weekend Differential	0.89	-21.3%	0.90	-21.6%	0.89	-22.5%	0.89	-23.5%

Note: Movement represents difference from last week.

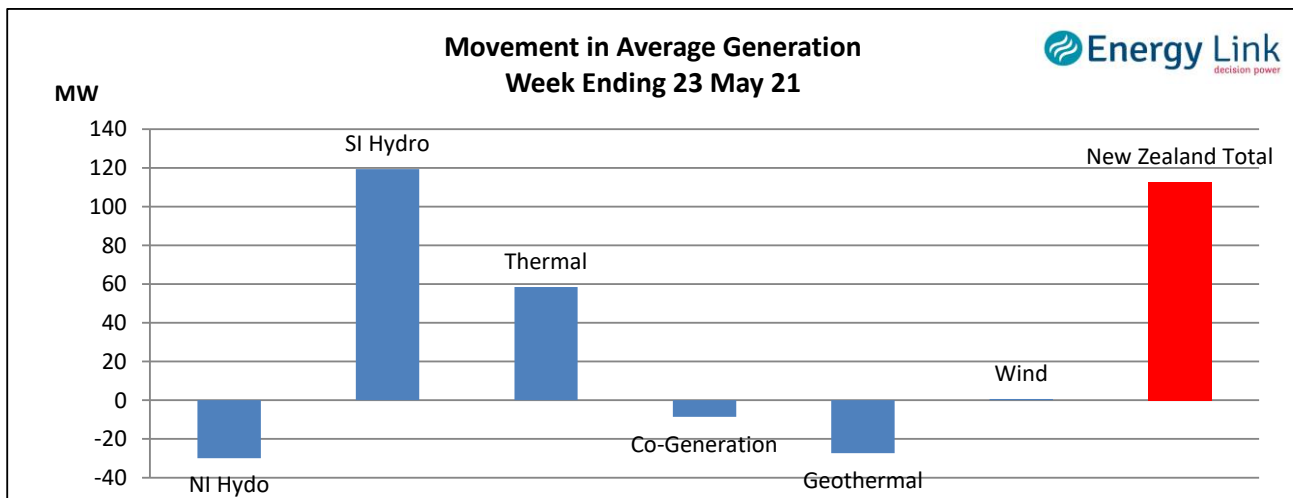
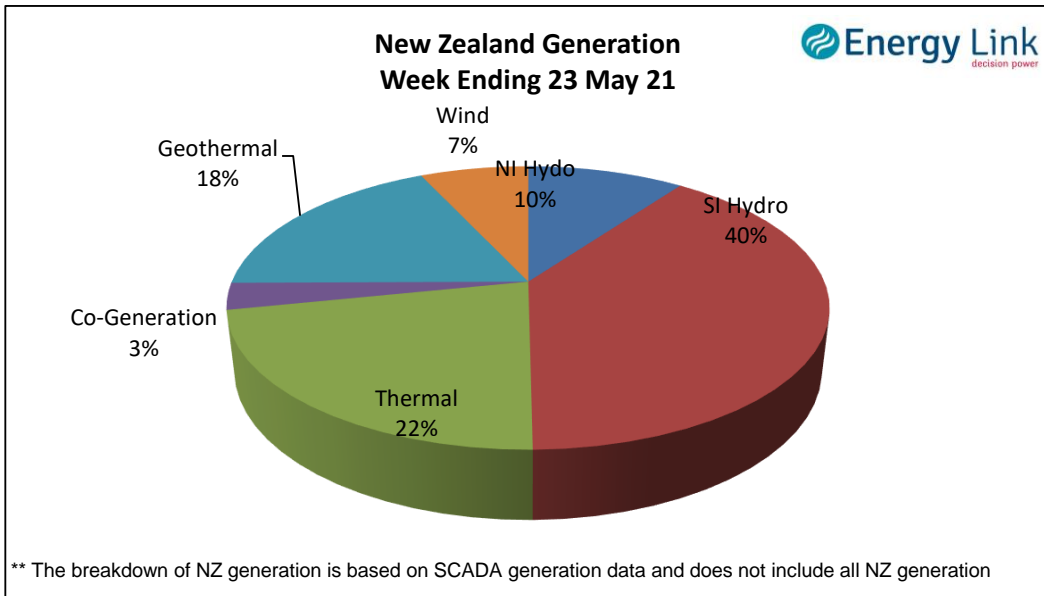
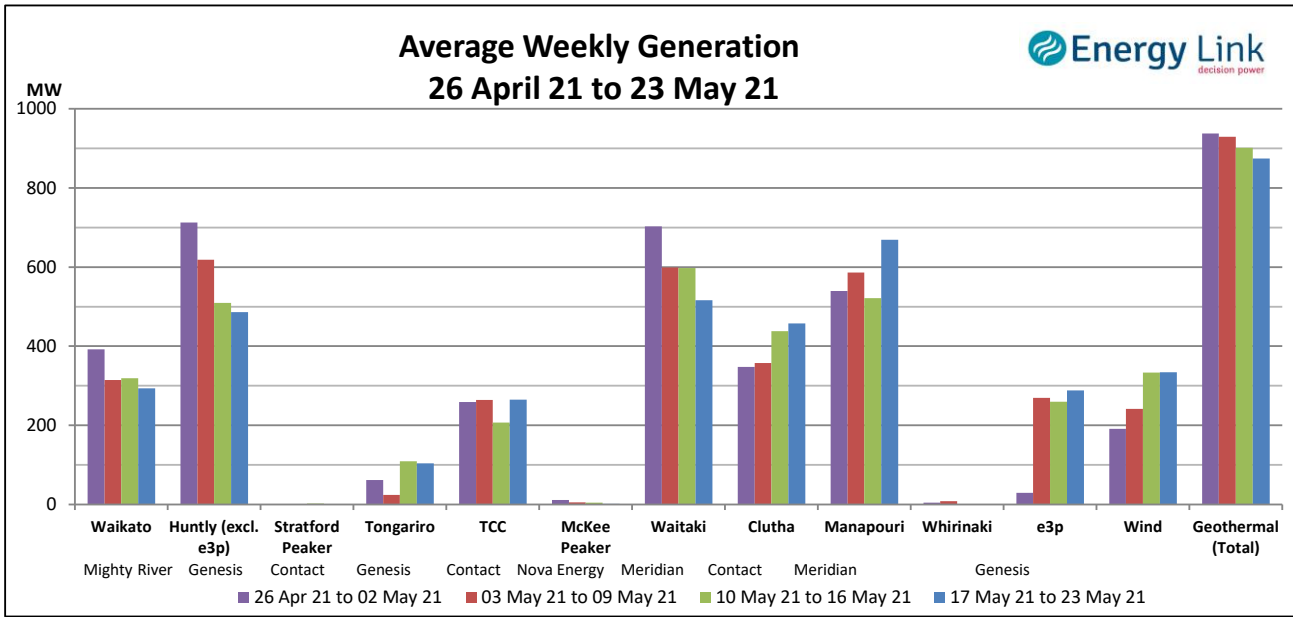
### Storage: (as at last Thursday)

Total Storage increased to 2020 GWh.

NI storage increased by 13% to 77 GWh while SI storage increased by 5% to 1944 GWh.



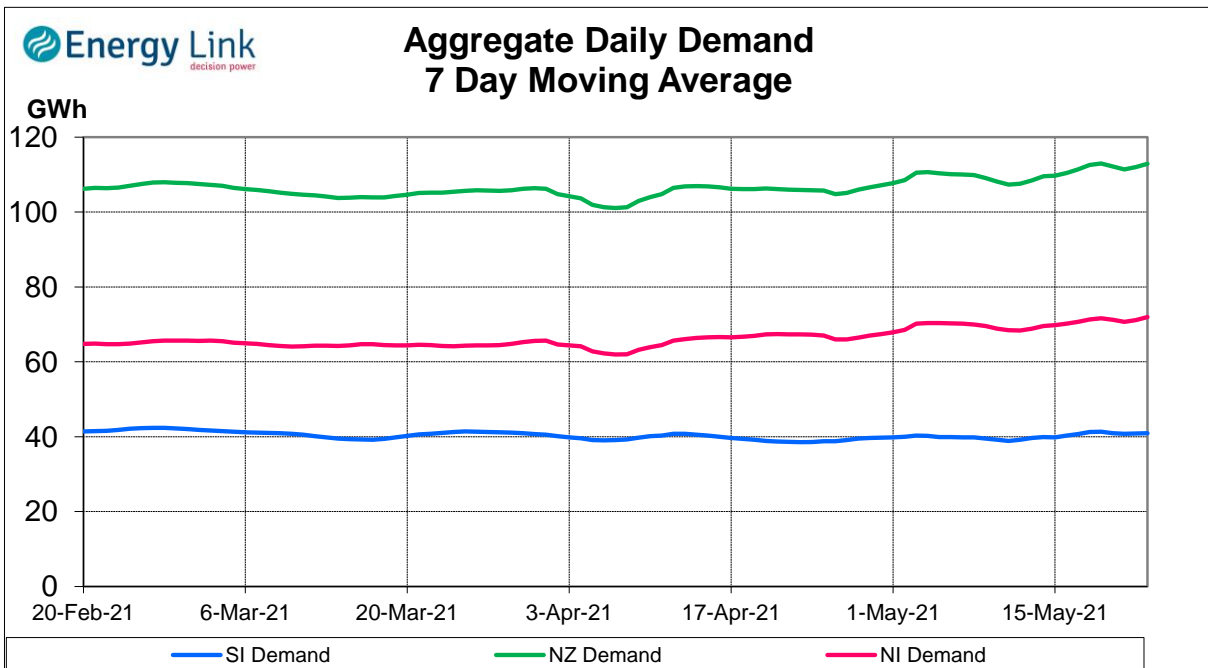
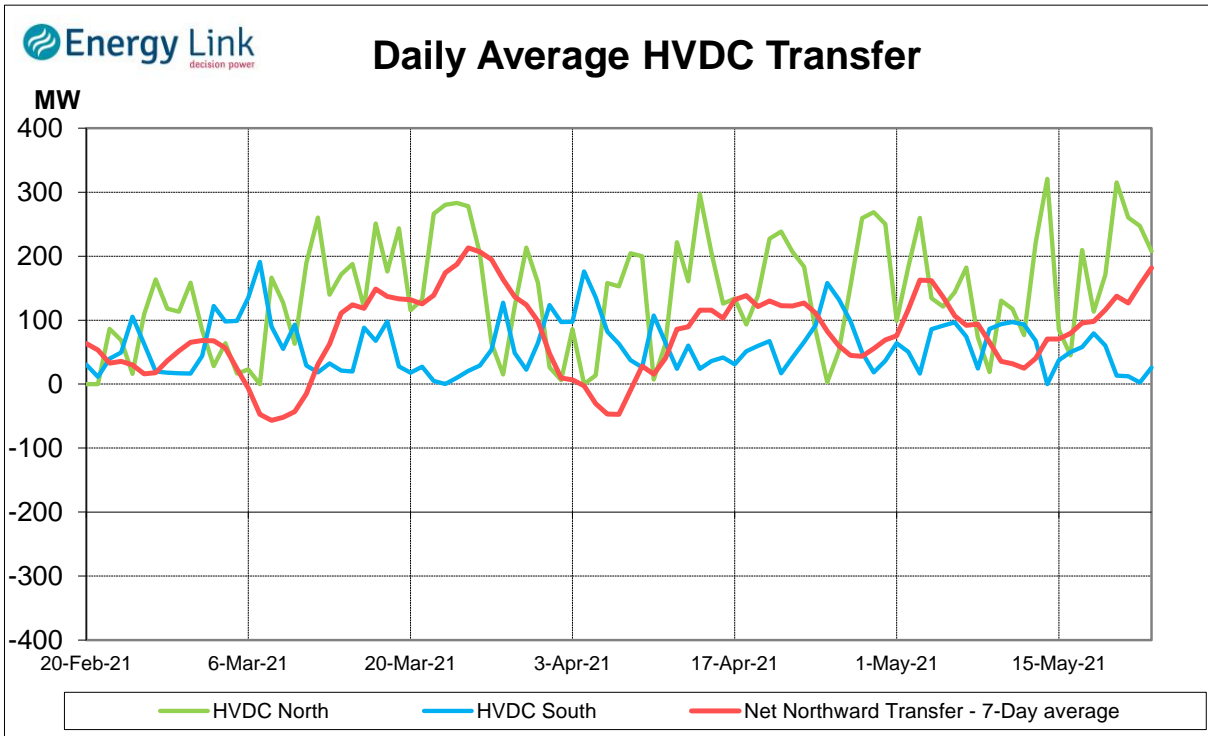
**Generation:**



**Average Generation Market Share <sup>1</sup>**

Contact	Mercury	Genesis	Meridian	Trustpower	Other
24% (23%)	15% (17%)	23% (24%)	29% (29%)	3% (3%)	5% (6%)

<sup>1</sup> Generation market share figures are based on SCADA data. The number in brackets represents the generation market share % from the previous week.

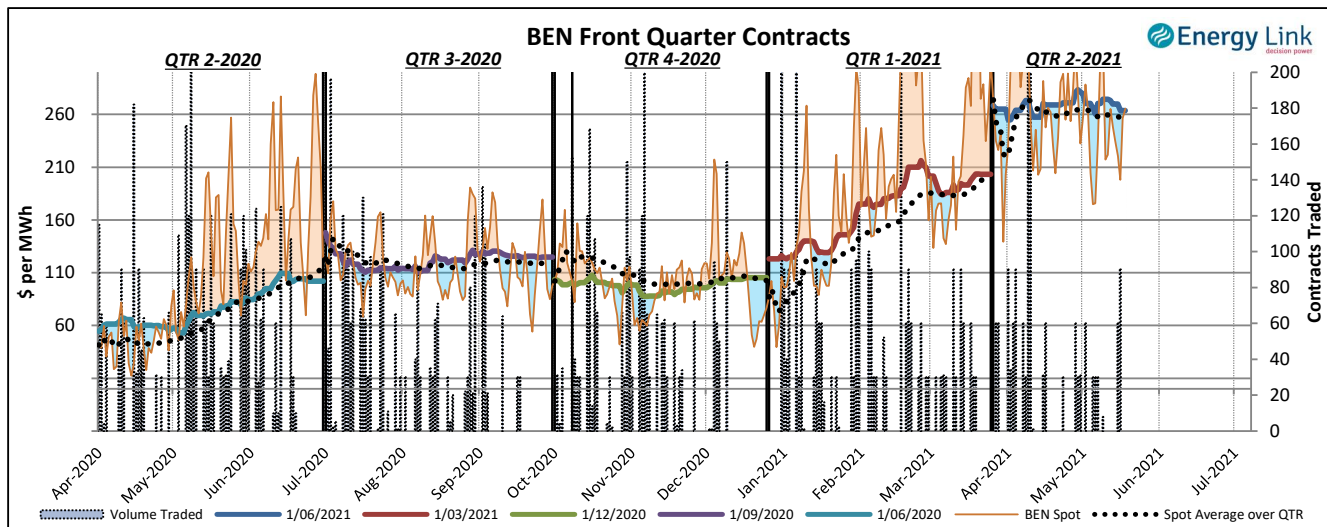
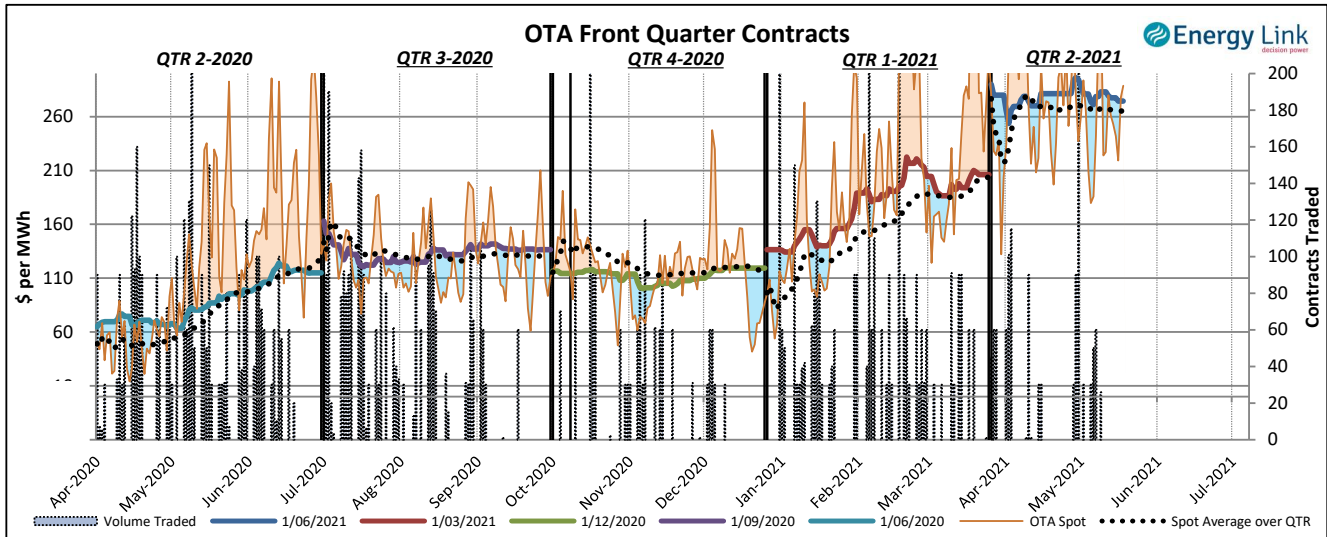


Demand data based on un-reconciled SCADA data.

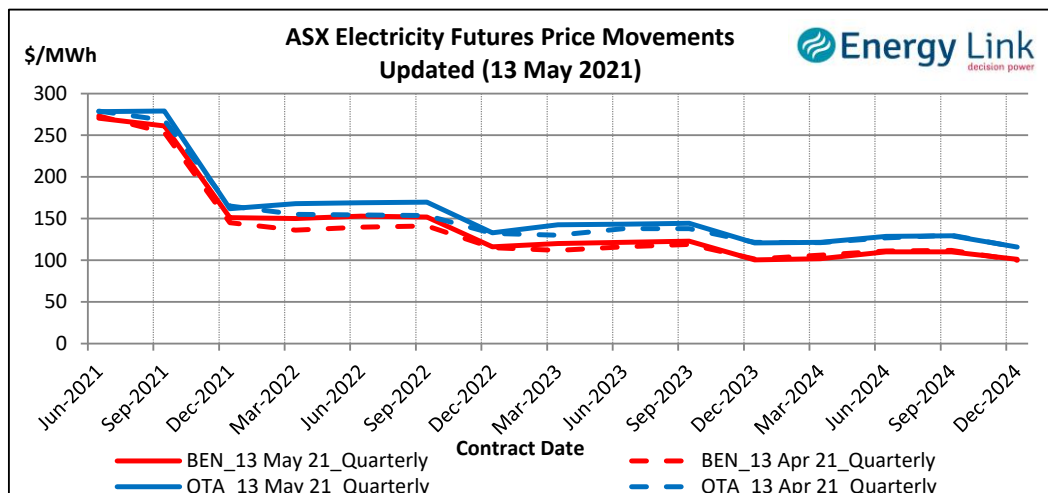
## ASX Electricity Futures

The **Australian Securities Exchange (ASX)** listed Base Load Electricity Futures, Strip Futures and Calendar year Strip Options for two grid reference points (Otauhu and Benmore) in the New Zealand electricity market in July 2009. The ASX New Zealand Electricity Futures contracts are cash settled using the arithmetic average of half-hourly prices at the designated node over the period of a calendar quarter.

The two charts below display the price movements of the front quarter futures contract during the current quarter and for the four quarters prior to the current quarter. Also shown is the volume of contracts traded, the relevant spot price and the spot average price over the quarter during the time when each contract was the front quarter contract.



The chart to the right shows the most recent transactions for all currently traded futures contracts at both the BEN & OTA nodes. For comparison these prices are mapped against the prices for the same contracts four weeks prior to the current Market Review.



### Carbon Dioxide Emissions

The chart below shows the estimated Carbon Dioxide (CO<sub>2</sub>) emissions for New Zealand's major thermal power stations. The estimates are based on weekly generation output and assumptions on each plant's thermal efficiency.

Note: Since 22 Feb 2016, Geothermal plant is now also included in the total carbon emissions.

