



Week ending 30 May 2021

Issue 1255

A weekly review of New Zealand electricity markets compiled by Energy Link Ltd

Prices:

South Island	BEN			ISL		
	30-May-21	23-May-21	Change	30-May-21	23-May-21	Change
Average Prices	357.02	241.24	↑ 48%	382.69	258.30	↑ 48%
Ratio Day/Night	1.12	1.15	→ -2%	1.13	1.16	→ -2%
Ratio Week/Other Day	0.95	0.89	↗ 6%	0.96	0.90	↗ 8%

Key (Week Difference)

↑	>=	10%
↗	>=	5%
→	>=	0%
↘	<=	-5%
↓	<=	-10%

North Island	HAY			OTA		
	30-May-21	23-May-21	Change	30-May-21	23-May-21	Change
Average Prices	367.03	245.93	↑ 49%	389.83	260.37	↑ 50%
Ratio Day/Night	1.16	1.18	→ -2%	1.22	1.24	→ -2%
Ratio Week/Other Day	0.95	0.89	↗ 6%	0.95	0.89	↗ 7%

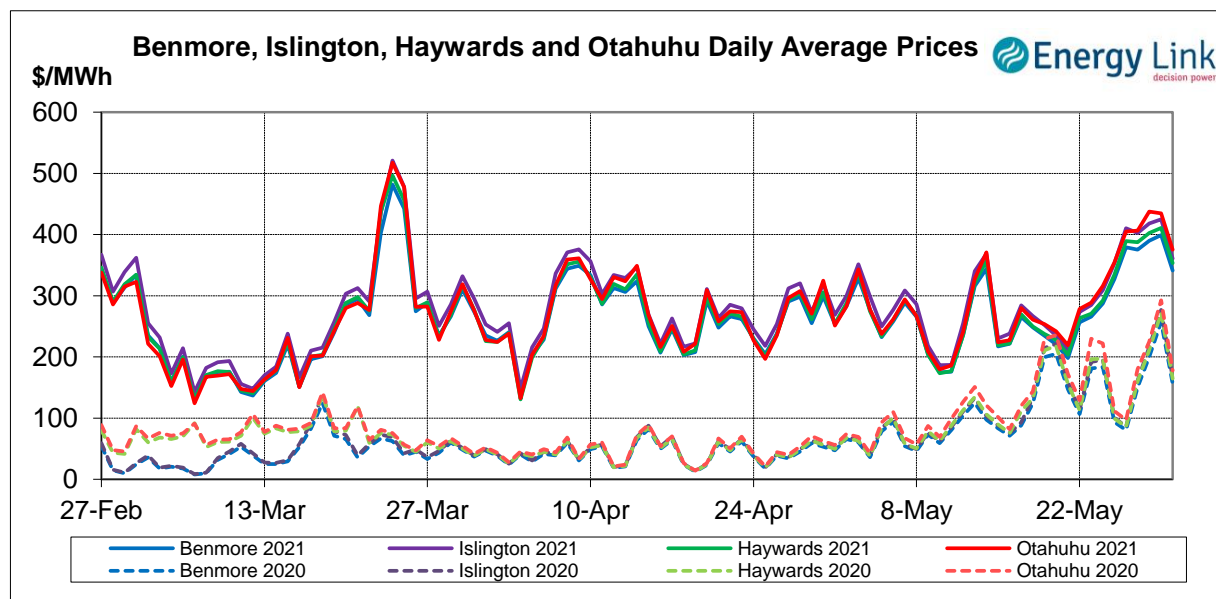
Price Differences	OTA-BEN			HAY-BEN		
	30-May-21	23-May-21	Change	30-May-21	23-May-21	Change
Average differences	32.80	19.13	↑ 71%	10.01	4.69	↑ 113%

Provisional Prices still apply to: Sat, 29 May 21

Price Highlights:

	Price \$/MWh	Day	Location	Period
Maximum nodal price	\$50,000.00	Saturday, 29 May 2021	Coleridge	46
Minimum nodal price	\$0.00	Monday, 24 May 2021	Linton	01
Maximum Ben_Hay differential	\$28.49	Saturday, 29 May 2021		21
Maximum NI reserve price	\$30.06	Wednesday, 26 May 2021		17

Please note: Any Provisional Prices are not included in Price Highlights



Subscribe at www.energylink.co.nz/publications

Average Wholesale Spot Prices

Date	Benmore (\$/MWh)		Islington (\$/MWh)		Haywards (\$/MWh)		Otahuhu (\$/MWh)	
	Day	Night	Day	Night	Day	Night	Day	Night
30/05/2021	381.70	260.26	404.18	273.35	398.11	263.71	428.10	268.97
29/05/2021	439.32	318.18	468.89	337.32	455.20	321.20	487.96	327.49
28/05/2021	383.43	402.89	412.27	430.33	401.09	404.82	445.50	420.85
27/05/2021	348.62	428.37	375.27	456.95	363.30	435.04	390.64	438.48
26/05/2021	379.32	379.16	411.63	407.72	393.35	381.18	415.97	382.71
25/05/2021	344.51	292.80	372.26	314.64	356.26	291.01	379.94	303.40
24/05/2021	315.99	229.99	341.16	244.82	323.84	228.47	354.52	239.20

Note: Night: 00:00 – 08:00 and Day 08:00 – 24:00

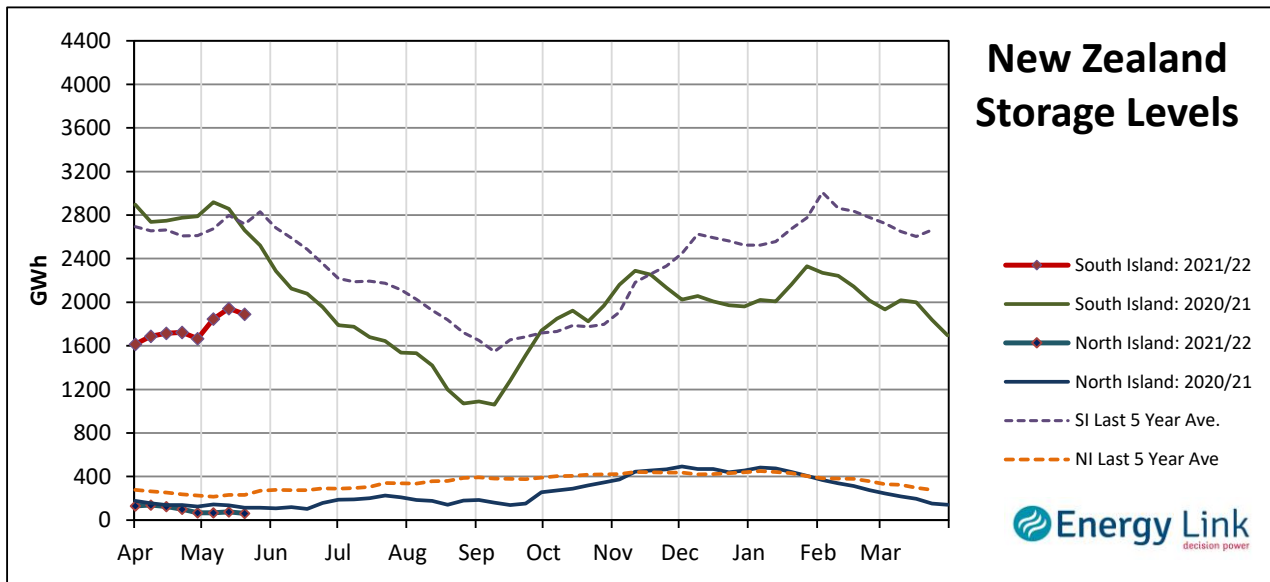
Indicator (\$/MWh)	Benmore	Movement	Islington	Movement	Haywards	Movement	Otahuhu	Movement
Average April 21 Price	261.18	-	279.38	-	263.43	-	268.69	-
Average May 21 Price	275.50	-	295.03	-	280.24	-	291.00	-
4 Week Moving Average Price	276.02	8.1%	295.78	8.3%	280.89	8.6%	292.70	10.2%
Weekly Average Price	357.02	48.0%	382.69	48.2%	367.03	49.2%	389.83	49.7%
Weekday Day Average Price	354.37	45.4%	358.09	33.9%	367.57	46.7%	397.31	48.1%
Weekday Night Average Price	346.64	63.1%	339.74	46.9%	348.10	64.6%	356.93	64.6%
Weekend Day Average Price	410.51	50.4%	440.58	68.4%	426.65	51.7%	458.03	50.7%
Weekend Night Average Price	289.22	21.8%	383.83	88.6%	292.45	22.5%	298.23	22.8%
Day - Night Differential	1.12	-2.2%	1.13	-2.3%	1.16	-2.1%	1.22	-1.8%
Weekday - Weekend Differential	0.95	6.4%	0.96	7.7%	0.95	6.3%	0.95	7.1%

Note: Movement represents difference from last week.

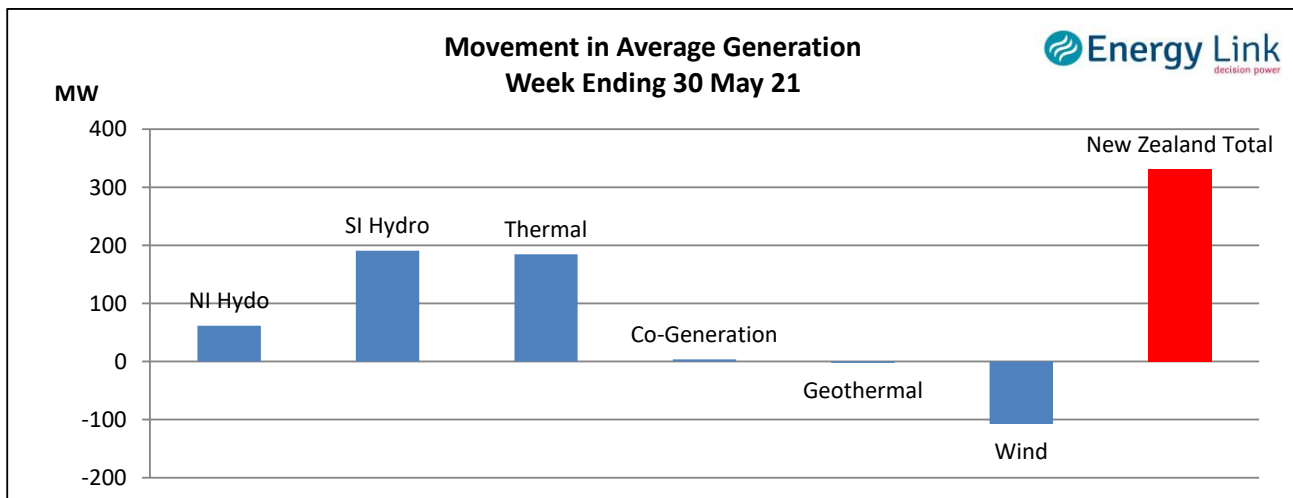
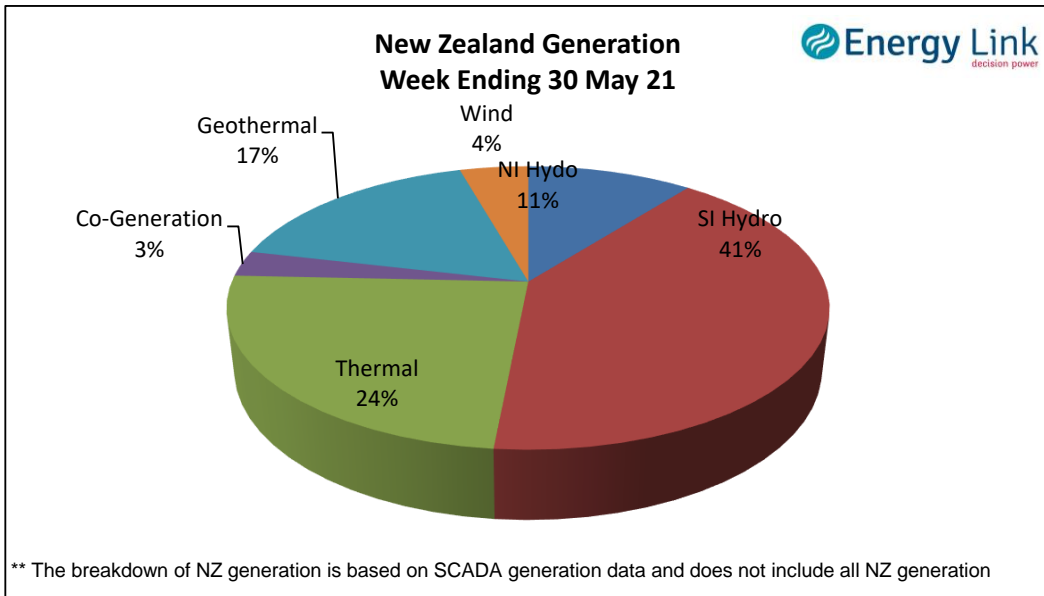
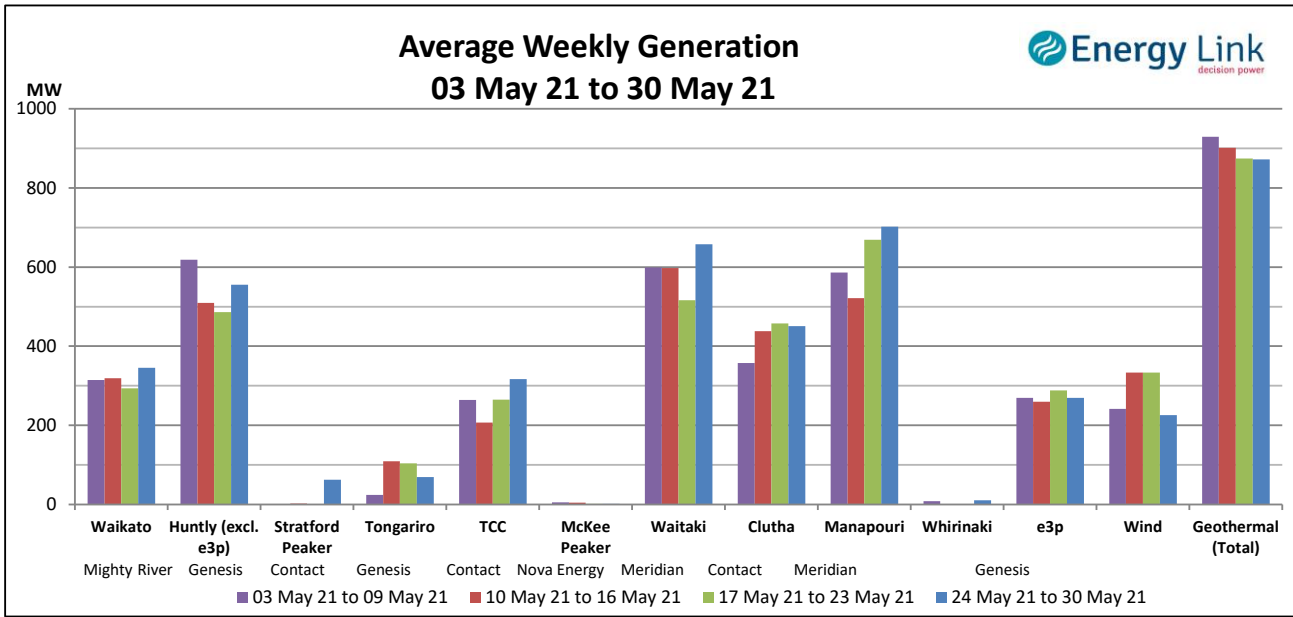
Storage: (as at last Thursday)

Total Storage decreased to 1953 GWh.

NI storage decreased by 19 % to 62 GWh while SI storage decreased by 3% to 1891 GWh.



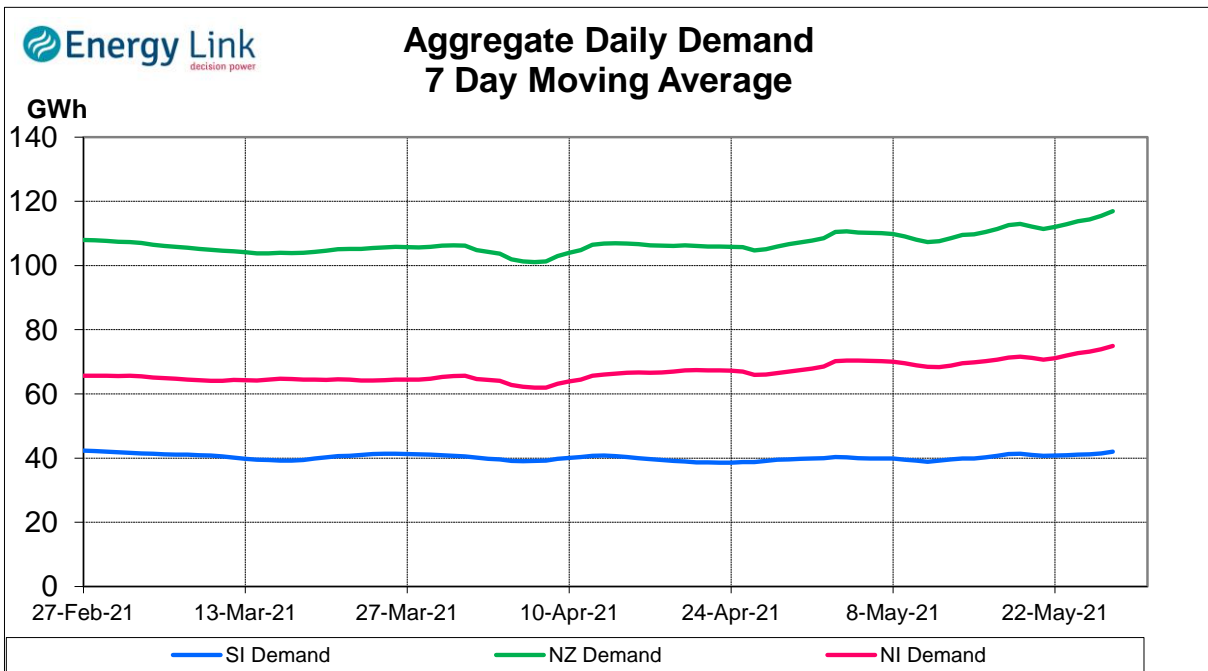
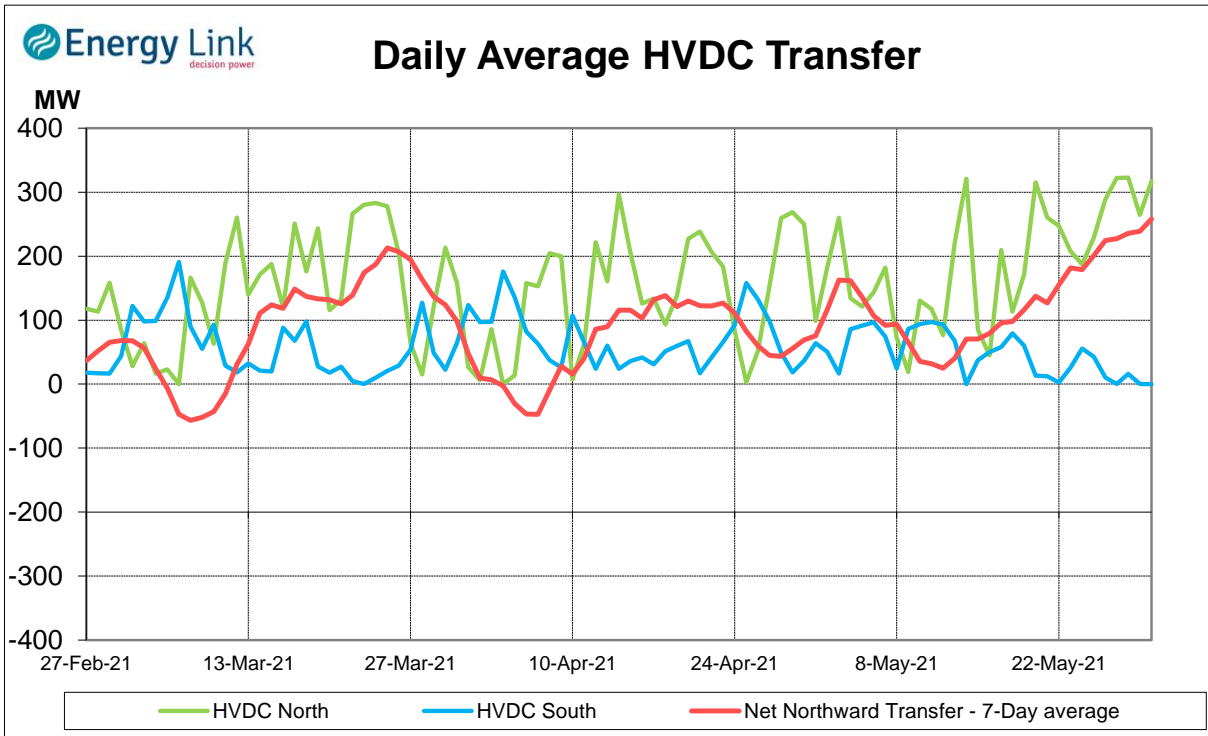
Generation:



Average Generation Market Share ¹

Contact	Mercury	Genesis	Meridian	Trustpower	Other
24% (24%)	15% (15%)	23% (23%)	29% (29%)	3% (3%)	5% (5%)

¹ Generation market share figures are based on SCADA data. The number in brackets represents the generation market share % from the previous week.

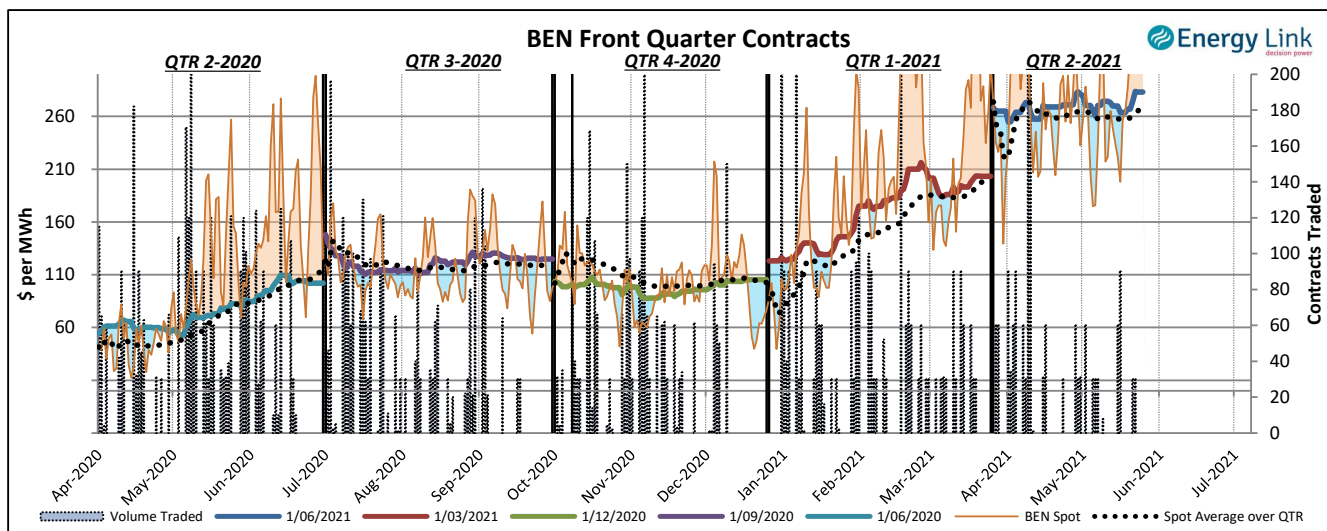
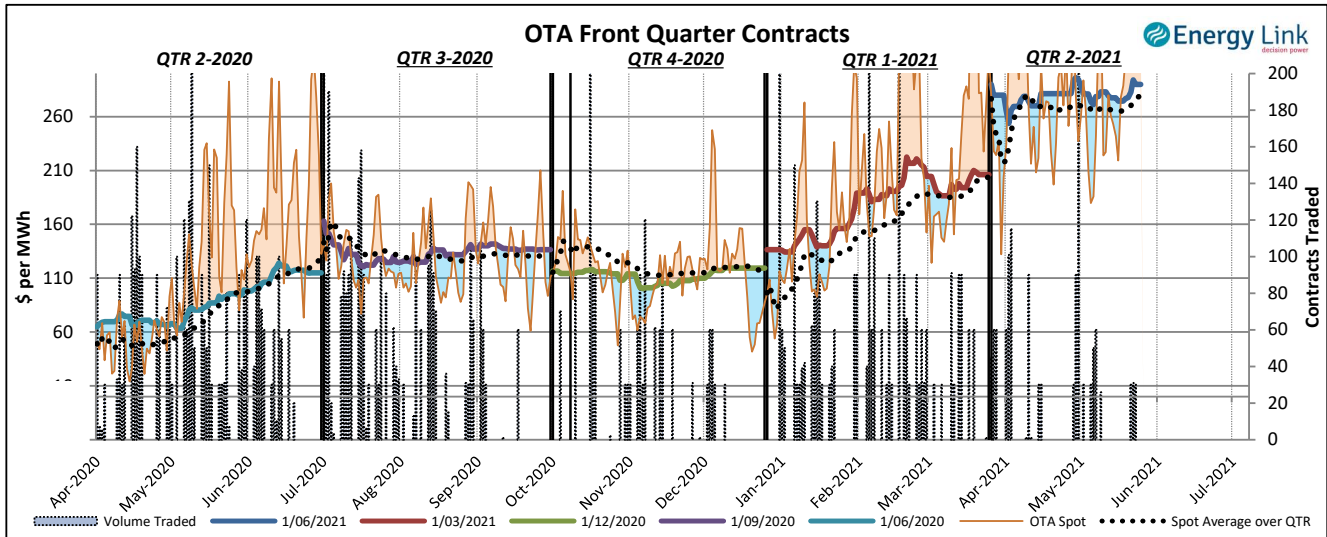


Demand data based on un-reconciled SCADA data.

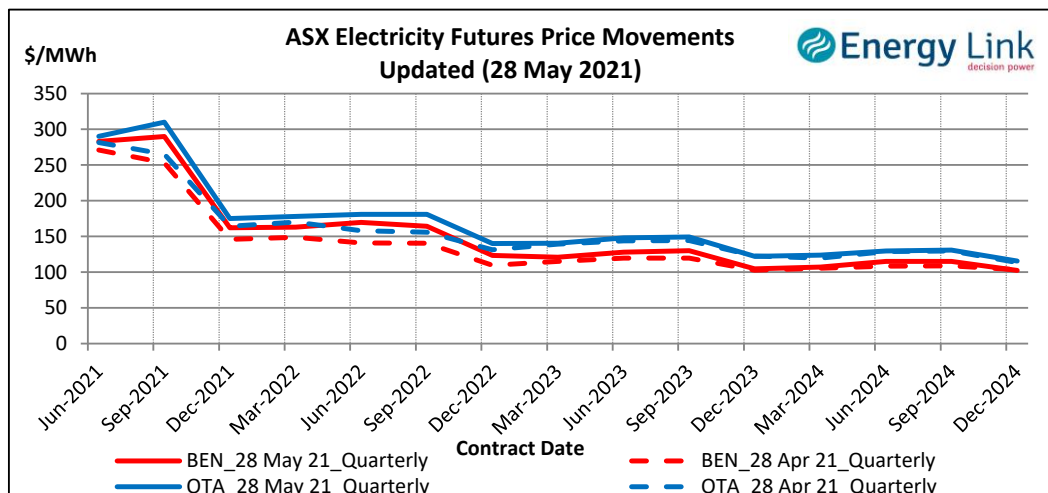
ASX Electricity Futures

The **Australian Securities Exchange (ASX)** listed Base Load Electricity Futures, Strip Futures and Calendar year Strip Options for two grid reference points (Otauhu and Benmore) in the New Zealand electricity market in July 2009. The ASX New Zealand Electricity Futures contracts are cash settled using the arithmetic average of half-hourly prices at the designated node over the period of a calendar quarter.

The two charts below display the price movements of the front quarter futures contract during the current quarter and for the four quarters prior to the current quarter. Also shown is the volume of contracts traded, the relevant spot price and the spot average price over the quarter during the time when each contract was the front quarter contract.



The chart to the right shows the most recent transactions for all currently traded futures contracts at both the BEN & OTA nodes. For comparison these prices are mapped against the prices for the same contracts four weeks prior to the current Market Review.



Carbon Dioxide Emissions

The chart below shows the estimated Carbon Dioxide (CO₂) emissions for New Zealand's major thermal power stations. The estimates are based on weekly generation output and assumptions on each plant's thermal efficiency.

Note: Since 22 Feb 2016, Geothermal plant is now also included in the total carbon emissions.

