



Week ending 20 December 2021

Issue 1284

A weekly review of New Zealand electricity markets compiled by Energy Link Ltd

Prices:

South Island	BEN			ISL		
	20-Dec-21	13-Dec-21	Change	20-Dec-21	13-Dec-21	Change
Average Prices	37.39	70.50	↓ -47%	36.80	74.28	↓ -50%
Ratio Day/Night	2.21	1.67	↑ 32%	2.06	1.68	↑ 23%
Ratio Week/Other Day	24.12	1.50	↑ 1502%	22.41	1.51	↑ 1383%

Key (Week Difference)

↑	>=	10%
↗	>=	5%
→	>=	0%
↘	<=	-5%
↓	<=	-10%

North Island	HAY			OTA		
	20-Dec-21	13-Dec-21	Change	20-Dec-21	13-Dec-21	Change
Average Prices	39.95	80.57	↓ -50%	46.78	97.54	↓ -52%
Ratio Day/Night	2.26	1.86	↑ 22%	2.40	2.00	↑ 20%
Ratio Week/Other Day	25.04	1.67	↑ 1401%	25.77	1.70	↑ 1415%

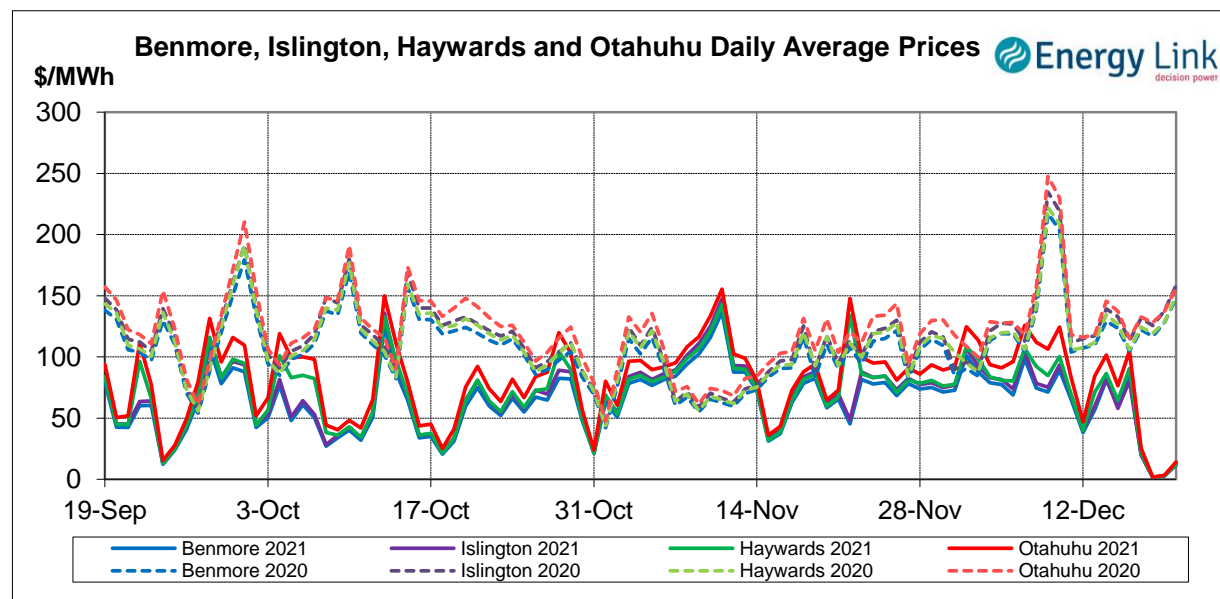
Price Differences	OTA-BEN			HAY-BEN		
	20-Dec-21	13-Dec-21	Change	20-Dec-21	13-Dec-21	Change
Average differences	9.40	27.04	↓ -65%	2.56	10.07	↓ -75%

All Prices are Final Prices

Price Highlights:

	Price \$/MWh	Day	Location	Period
Maximum nodal price	\$382.61	Tuesday, 14 December 2021	Maungaturoto	17
Minimum nodal price	\$0.00	Tuesday, 14 December 2021	Kaitimako	16
Maximum Ben_Hay differential	\$19.28	Tuesday, 14 December 2021		17
Maximum NI reserve price	\$140.06	Tuesday, 14 December 2021		17

Please note: Any Provisional Prices are not included in Price Highlights



Subscribe at www.energylink.co.nz/publications

Average Wholesale Spot Prices

Date	Benmore (\$/MWh)		Islington (\$/MWh)		Haywards (\$/MWh)		Otahuhu (\$/MWh)	
	Day	Night	Day	Night	Day	Night	Day	Night
20/12/2021	12.92	9.30	13.68	9.85	13.60	9.37	16.08	10.41
19/12/2021	4.09	0.01	4.32	0.01	4.21	0.01	4.83	0.01
18/12/2021	1.68	1.26	1.78	1.33	1.74	1.29	1.97	1.42
17/12/2021	22.77	15.43	21.79	15.85	24.11	16.07	28.80	18.15
16/12/2021	104.94	42.19	99.23	43.02	113.59	44.81	132.76	49.42
15/12/2021	85.91	9.42	82.10	9.52	91.99	9.89	108.89	11.81
14/12/2021	87.69	67.51	87.96	71.42	94.13	70.70	113.19	78.23

Note: Night: 00:00 – 08:00 and Day 08:00 – 24:00

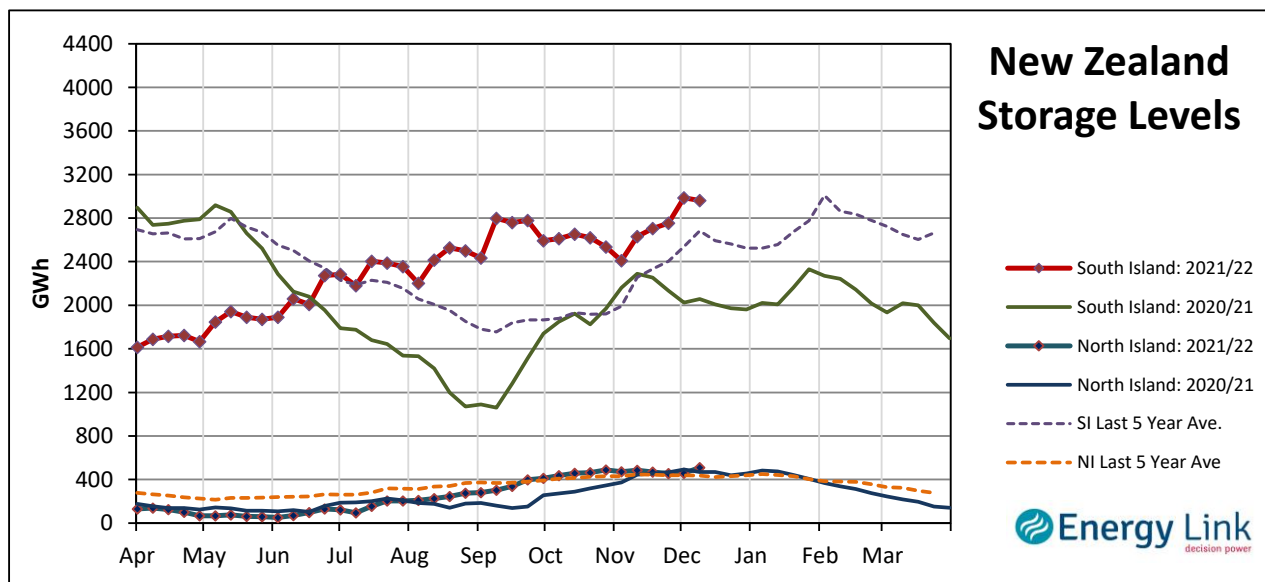
Indicator (\$/MWh)	Benmore	Movement	Islington	Movement	Haywards	Movement	Otahuhu	Movement
Average November 21 Price	75.97	-	81.03	-	82.32	-	91.89	-
Average December 21 Price	62.08	-	64.60	-	68.63	-	81.08	-
4 Week Moving Average Price	65.96	-8.3%	69.08	-9.4%	71.91	-11.1%	84.02	-9.8%
Weekly Average Price	37.39	-47.0%	36.80	-50.5%	39.95	-50.4%	46.78	-52.0%
Weekday Day Average Price	62.85	-30.0%	70.67	-18.5%	67.48	-37.3%	79.94	-39.8%
Weekday Night Average Price	28.77	-47.2%	28.70	-42.3%	30.17	-47.7%	33.60	-49.0%
Weekend Day Average Price	2.89	-95.2%	11.78	-87.2%	2.97	-95.4%	3.40	-95.6%
Weekend Night Average Price	0.63	-98.1%	8.59	-85.4%	0.65	-98.1%	0.72	-98.2%
Day - Night Differential	2.21	31.7%	2.06	22.9%	2.26	21.5%	2.40	19.7%
Weekday - Weekend Differential	24.12	1502.4%	22.41	1382.6%	25.04	#####	25.77	#####

Note: Movement represents difference from last week.

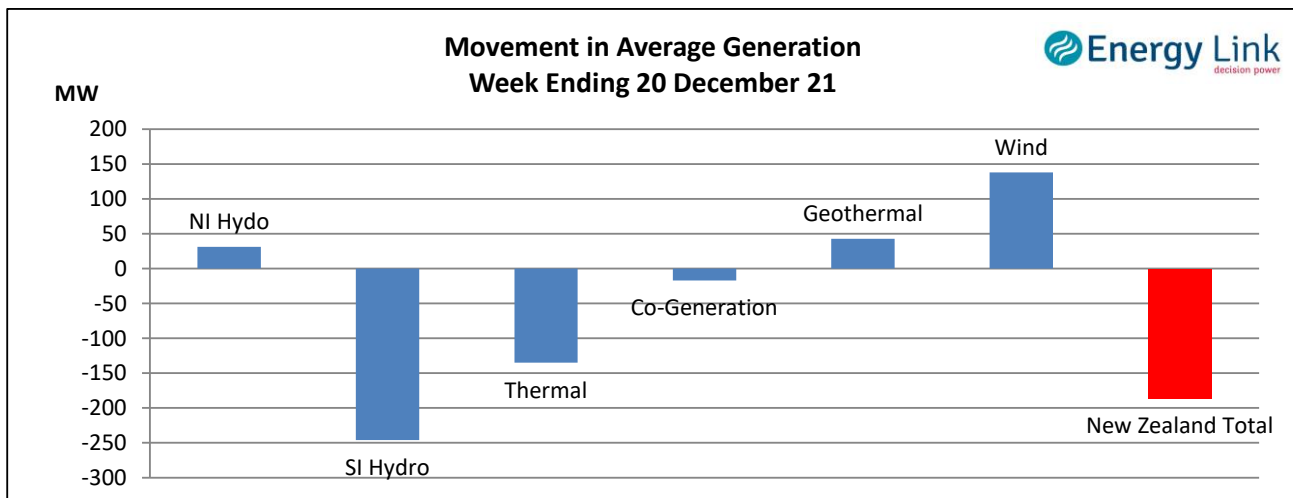
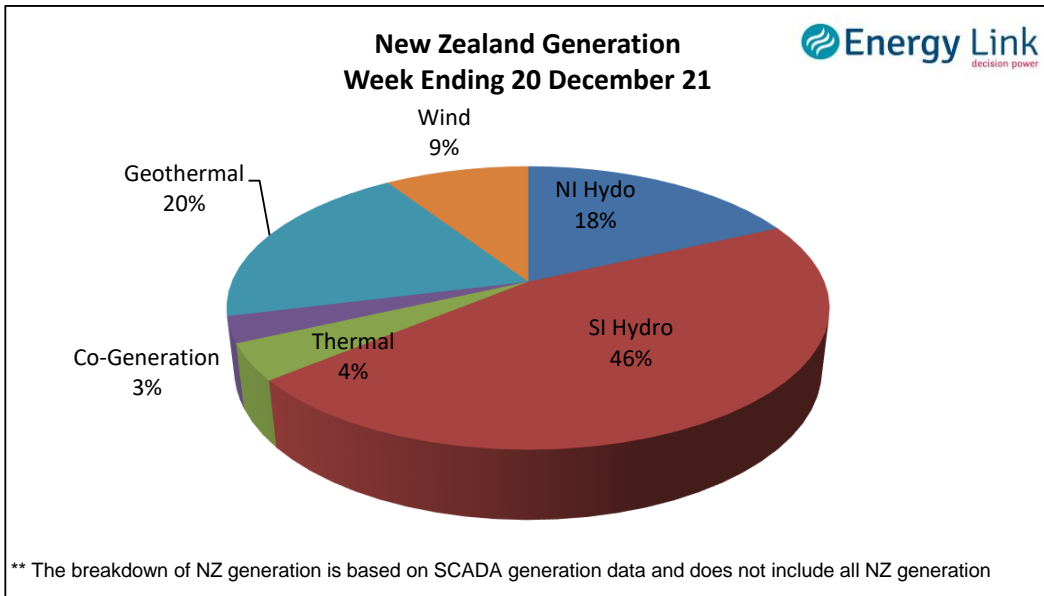
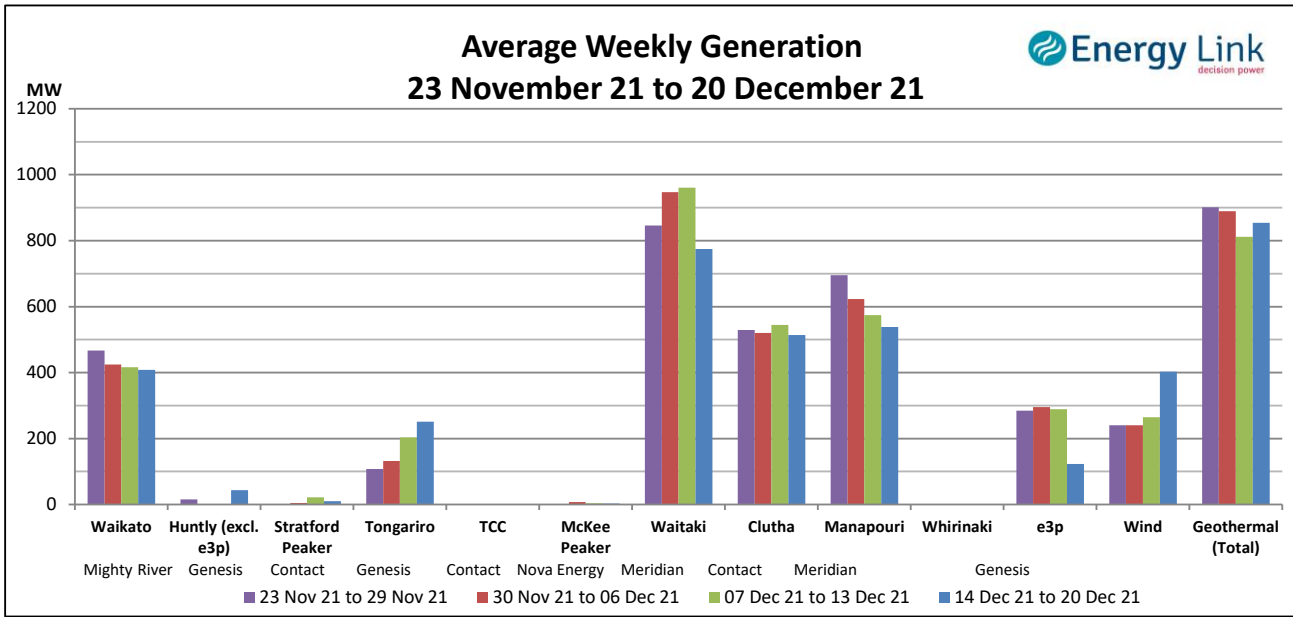
Storage: (as at last Thursday)

Total Storage increased to 3472 GWh.

NI storage increased by 12% to 510 GWh while SI storage decreased by 1% to 2962 GWh.



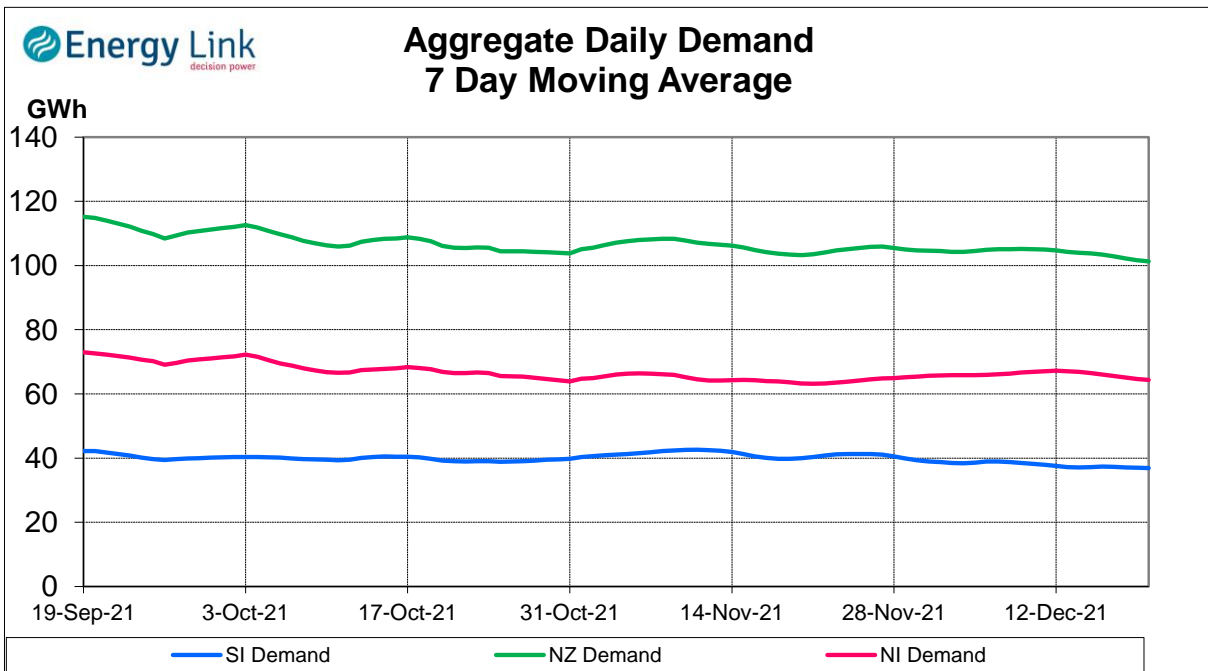
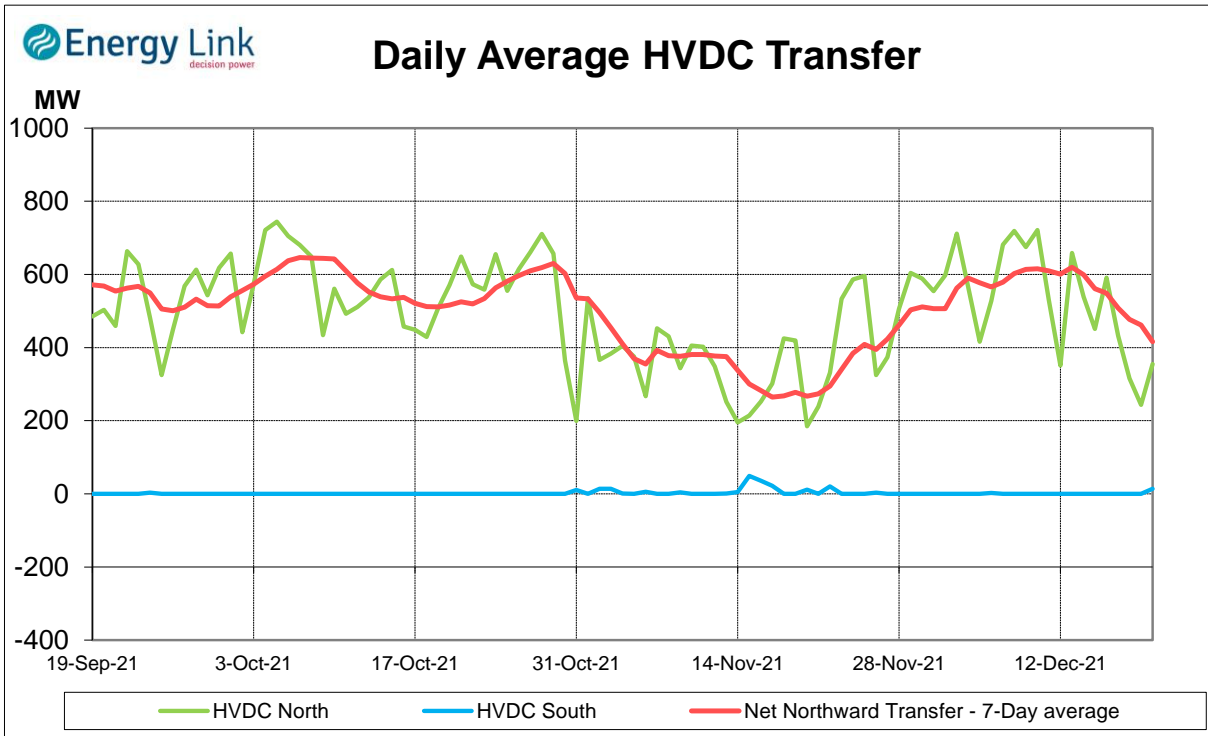
Generation:



Average Generation Market Share ¹

Contact	Mercury	Genesis	Meridian	Trustpower	Other
21% (21%)	20% (19%)	13% (15%)	34% (37%)	3% (3%)	8% (6%)

¹ Generation market share figures are based on SCADA data. The number in brackets represents the generation market share % from the previous week.

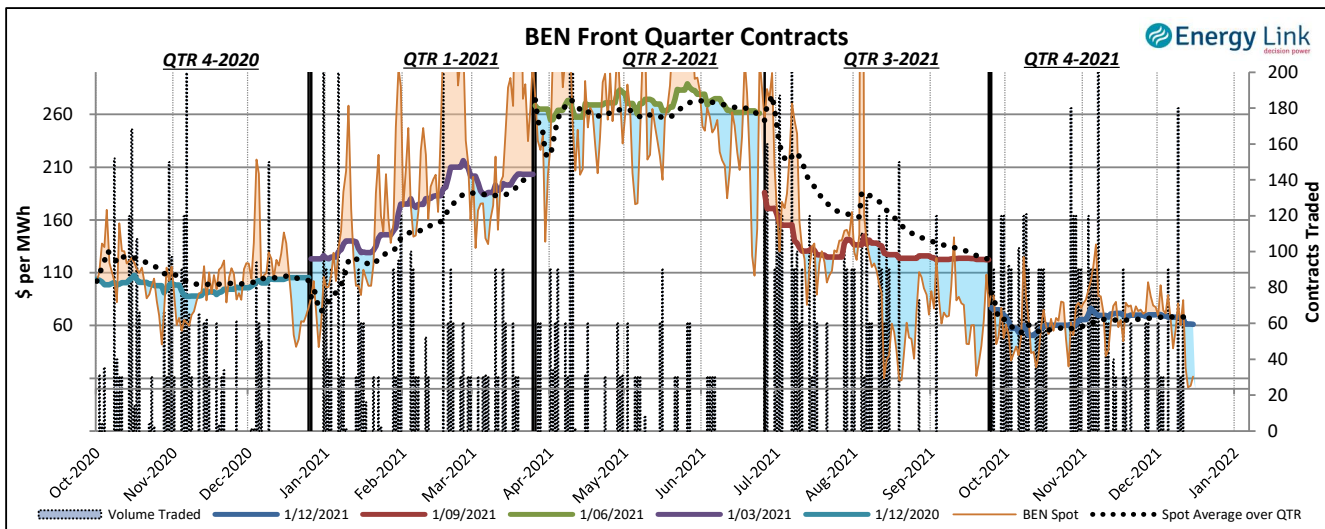
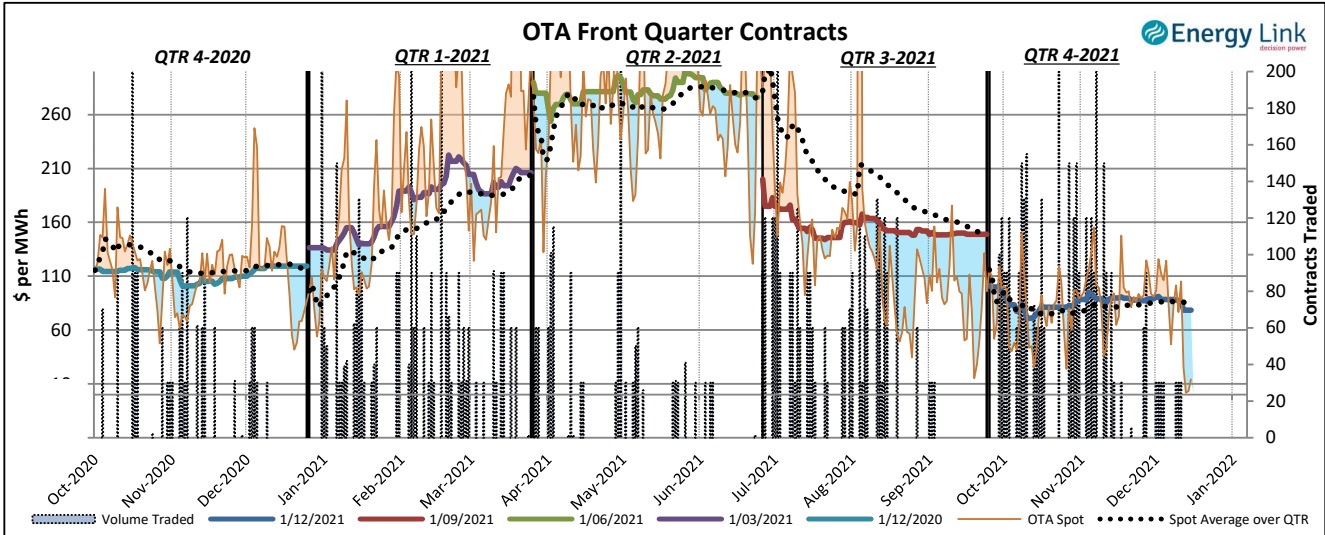


Demand data based on un-reconciled SCADA data.

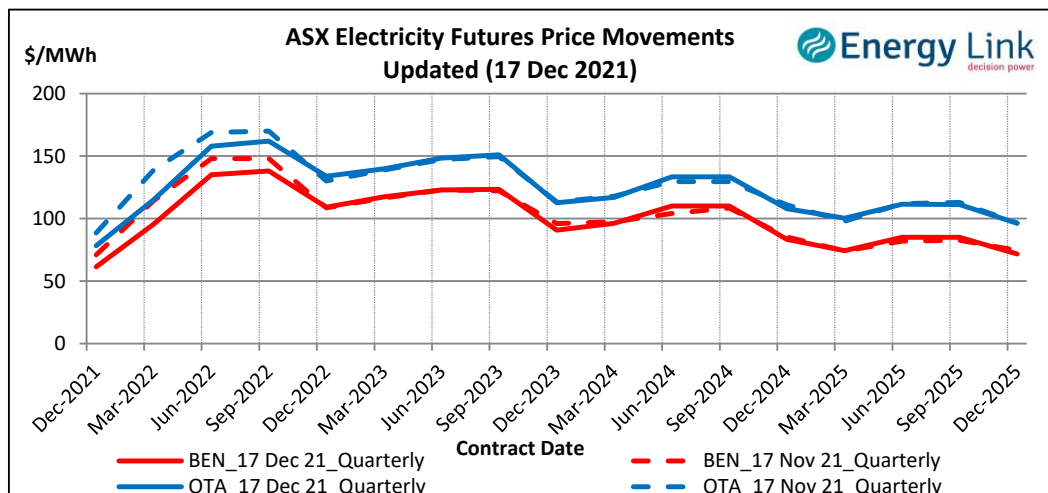
ASX Electricity Futures

The **Australian Securities Exchange (ASX)** listed Base Load Electricity Futures, Strip Futures and Calendar year Strip Options for two grid reference points (Otauhu and Benmore) in the New Zealand electricity market in July 2009. The ASX New Zealand Electricity Futures contracts are cash settled using the arithmetic average of half-hourly prices at the designated node over the period of a calendar quarter.

The two charts below display the price movements of the front quarter futures contract during the current quarter and for the four quarters prior to the current quarter. Also shown is the volume of contracts traded, the relevant spot price and the spot average price over the quarter during the time when each contract was the front quarter contract.



The chart to the right shows the most recent transactions for all currently traded futures contracts at both the BEN & OTA nodes. For comparison these prices are mapped against the prices for the same contracts four weeks prior to the current Market Review.



Carbon Dioxide Emissions

The chart below shows the estimated Carbon Dioxide (CO₂) emissions for New Zealand's major thermal power stations. The estimates are based on weekly generation output and assumptions on each plant's thermal efficiency.

Note: Since 22 Feb 2016, Geothermal plant is now also included in the total carbon emissions.

