

# EnergyTrendz WEEKLY

Week ending 5 June 2022

Issue 1308

A weekly review of New Zealand electricity markets compiled by Energy Link Ltd

**Prices:**

South Island	BEN			ISL		
	5-Jun-22	29-May-22	Change	5-Jun-22	29-May-22	Change
Average Prices	168.09	213.75	↓ -21%	179.69	230.84	↓ -22%
Ratio Day/Night	1.16	1.02	↑ 14%	1.16	1.02	↑ 13%
Ratio Week/Other Day	0.86	0.96	↓ -11%	0.86	0.98	↓ -12%

**Key (Week Difference)**

↑	>=	10%
↗	>=	5%
→	>=	0%
↘	<=	-5%
↓	<=	-10%

North Island	HAY			OTA		
	5-Jun-22	29-May-22	Change	5-Jun-22	29-May-22	Change
Average Prices	171.73	217.46	↓ -21%	185.47	229.75	↓ -19%
Ratio Day/Night	1.21	1.05	↑ 15%	1.30	1.09	↑ 19%
Ratio Week/Other Day	0.86	0.98	↓ -13%	0.89	1.02	↓ -13%

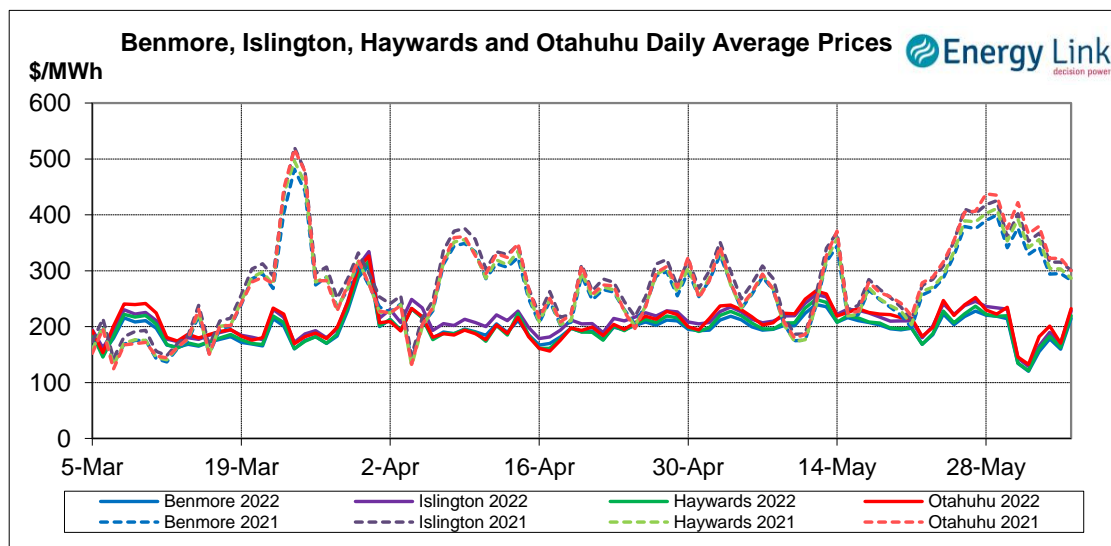
Price Differences	OTA-BEN			HAY-BEN		
	5-Jun-22	29-May-22	Change	5-Jun-22	29-May-22	Change
Average differences	17.37	15.99	↗ 9%	3.64	3.70	↘ -2%

Provisional Prices still apply to: Fri, 03 Jun 22

**Price Highlights:**

	Price \$/MWh	Day	Location	Period
Maximum nodal price	\$50,000.00	Friday, 3 June 2022	Coleridge	36
Minimum nodal price	\$0.00	Monday, 30 May 2022	Coleridge	01
Maximum Ben_Hay differential	\$17.32	Thursday, 2 June 2022		37
Maximum NI reserve price	\$132.98	Saturday, 4 June 2022		36

Please note: Any Provisional Prices are not included in Price Highlights



Subscribe at [www.energylink.co.nz/publications](http://www.energylink.co.nz/publications)

### Average Wholesale Spot Prices

Date	Benmore (\$/MWh)		Islington (\$/MWh)		Haywards (\$/MWh)		Otahuhu (\$/MWh)	
	Day	Night	Day	Night	Day	Night	Day	Night
5/06/2022	220.91	202.19	234.51	215.74	228.31	202.02	246.36	203.78
4/06/2022	161.64	155.90	172.55	166.60	166.81	154.91	176.97	156.57
3/06/2022	180.92	172.63	192.93	184.17	188.15	173.36	211.36	180.87
2/06/2022	205.00	56.60	217.76	60.95	213.92	55.67	244.03	58.35
1/06/2022	131.86	96.77	141.48	103.45	133.83	95.64	149.39	98.84
31/05/2022	116.73	169.17	124.77	180.97	118.92	166.42	131.86	172.98
30/05/2022	216.01	210.55	233.94	225.74	224.68	209.18	246.02	211.44

Note: Night: 00:00 – 08:00 and Day 08:00 – 24:00

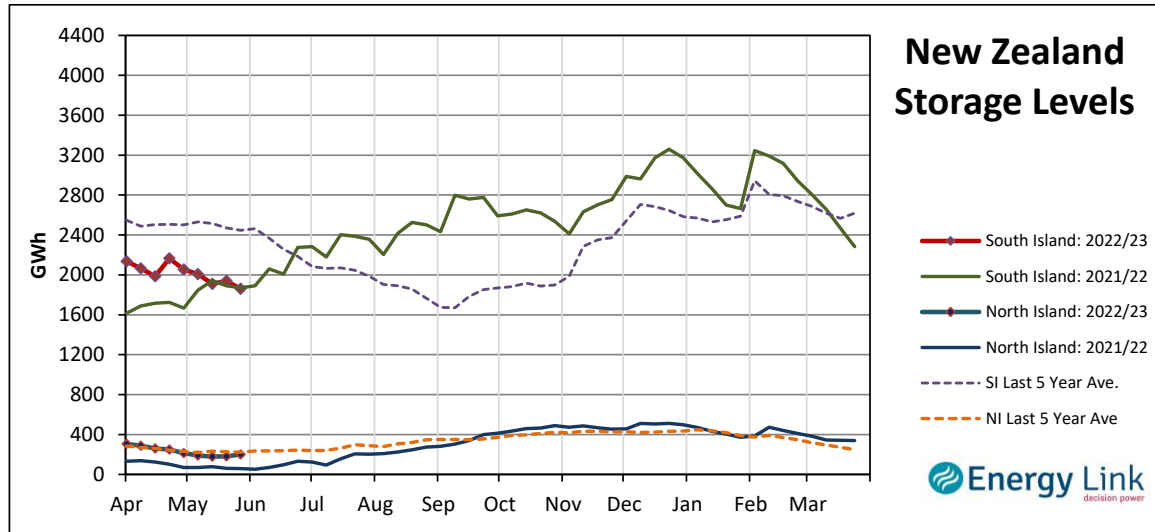
Indicator (\$/MWh)	Benmore	Movement	Islington	Movement	Haywards	Movement	Otahuhu	Movement
Average May 22 Price	205.35	-	220.86	-	209.30	-	222.86	-
Average June 22 Price	165.65	-	176.63	-	169.57	-	183.64	-
4 Week Moving Average Price	199.17	-4.3%	214.25	-4.3%	202.88	-4.4%	217.33	-3.9%
Weekly Average Price	168.09	-21.4%	179.69	-22.2%	171.73	-21.0%	185.47	-19.3%
Weekday Day Average Price	170.10	-20.6%	190.26	-14.3%	175.90	-20.5%	196.53	-18.0%
Weekday Night Average Price	141.14	-31.5%	161.05	-21.3%	140.05	-32.1%	144.50	-32.6%
Weekend Day Average Price	191.27	-11.8%	182.74	-22.5%	197.56	-9.7%	211.67	-6.9%
Weekend Night Average Price	179.05	-20.4%	175.39	-29.9%	178.46	-20.1%	180.17	-19.4%
Day - Night Differential	1.16	14.1%	1.16	13.5%	1.21	15.3%	1.30	19.3%
Weekday - Weekend Differential	0.86	-11.0%	0.86	-11.8%	0.86	-12.6%	0.89	-12.9%

Note: Movement represents difference from last week.

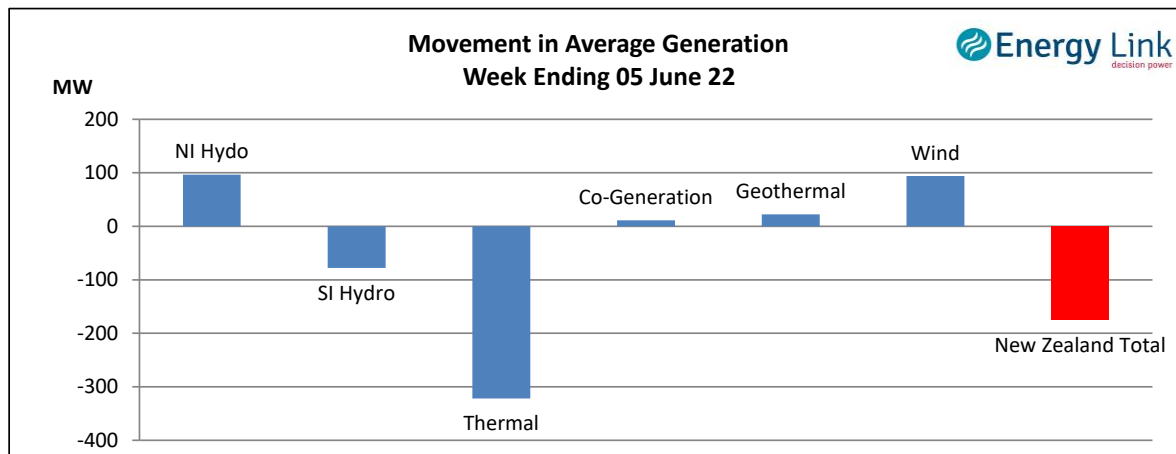
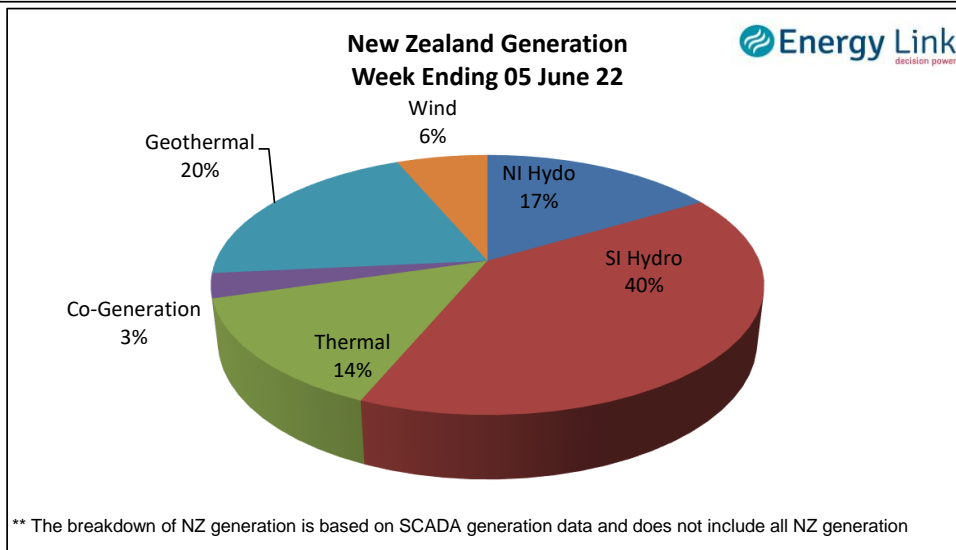
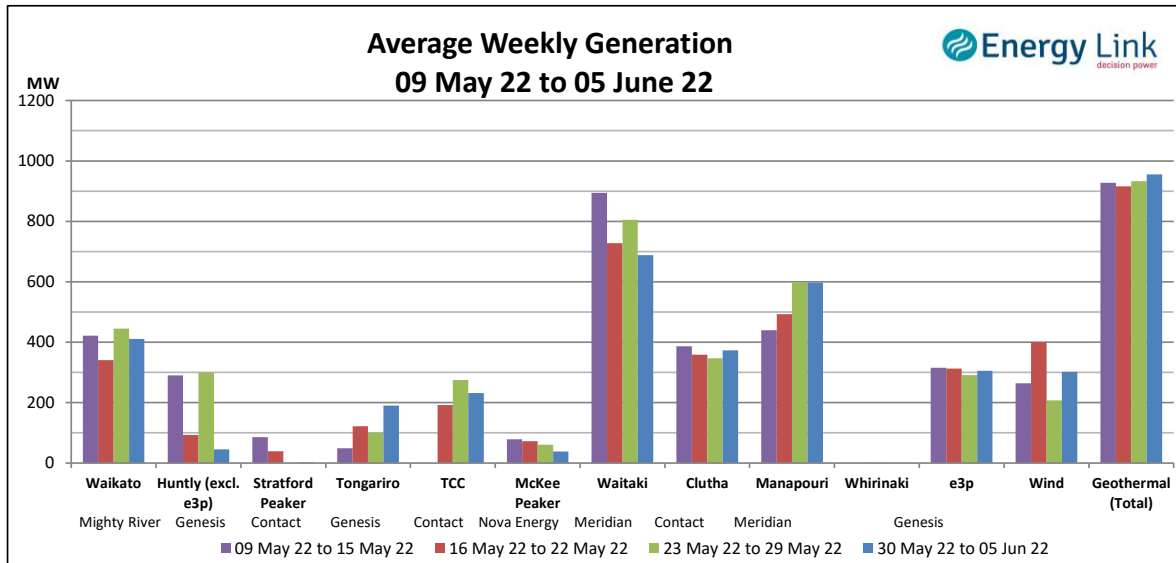
### Storage: (as at last Thursday)

Total Storage decreased to 2059 GWh.

NI storage increased by 9% to 199 GWh while SI storage decreased by 4% to 1859 GWh.



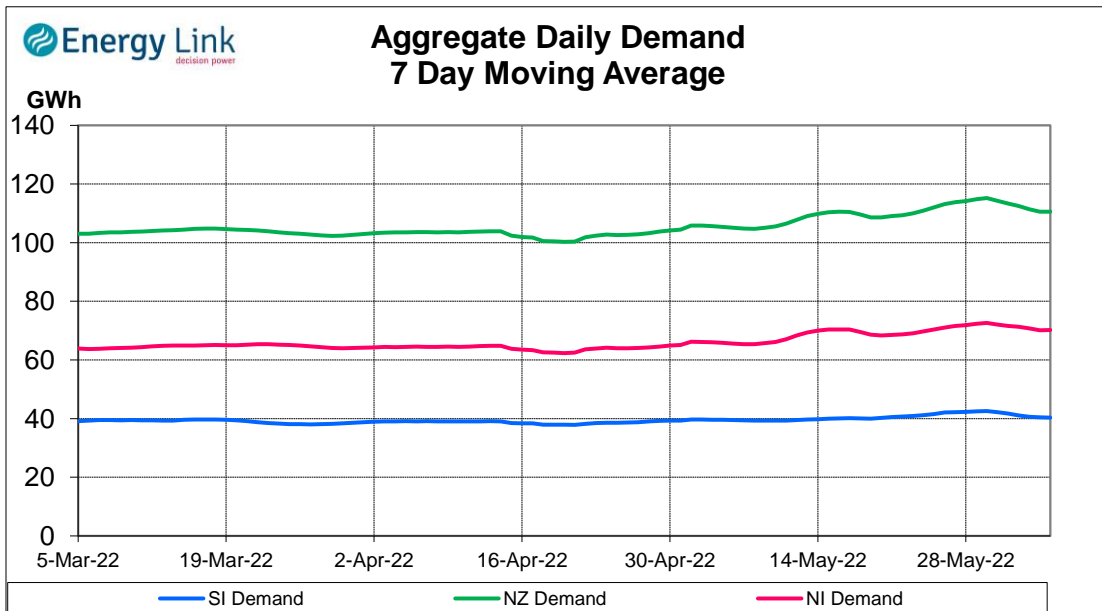
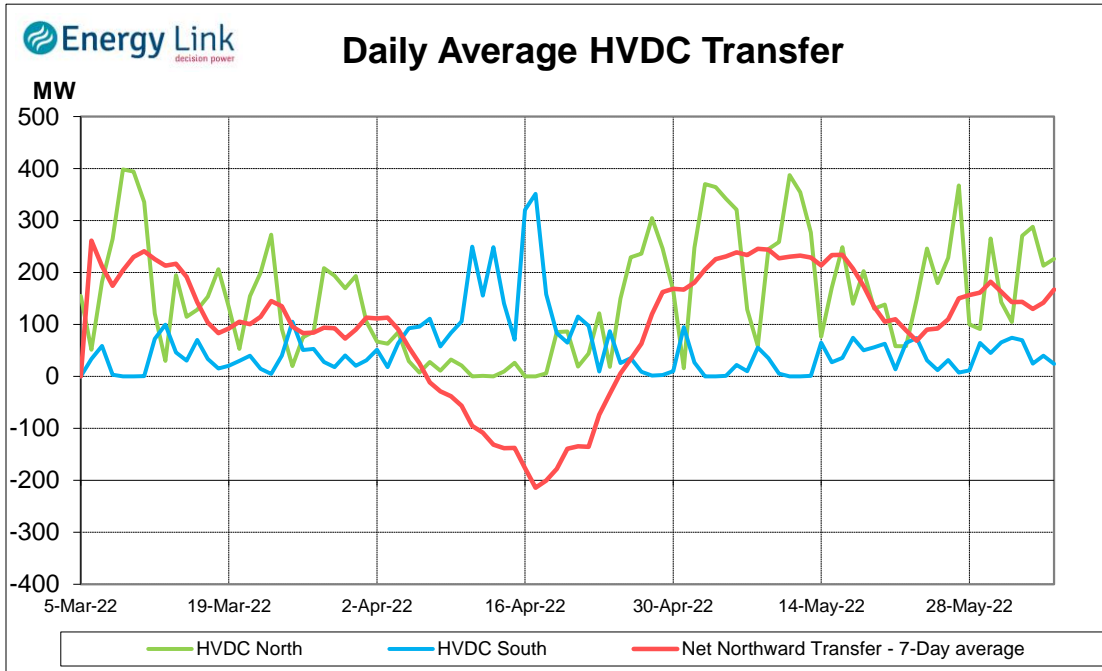
**Generation:**



**Average Generation Market Share <sup>1</sup>**

Contact	Mercury	Genesis	Meridian	Trustpower	Other
22% (21%)	21% (20%)	16% (18%)	31% (31%)	4% (3%)	7% (7%)

<sup>1</sup> Generation market share figures are based on SCADA data. The number in brackets represents the generation market share % from the previous week.

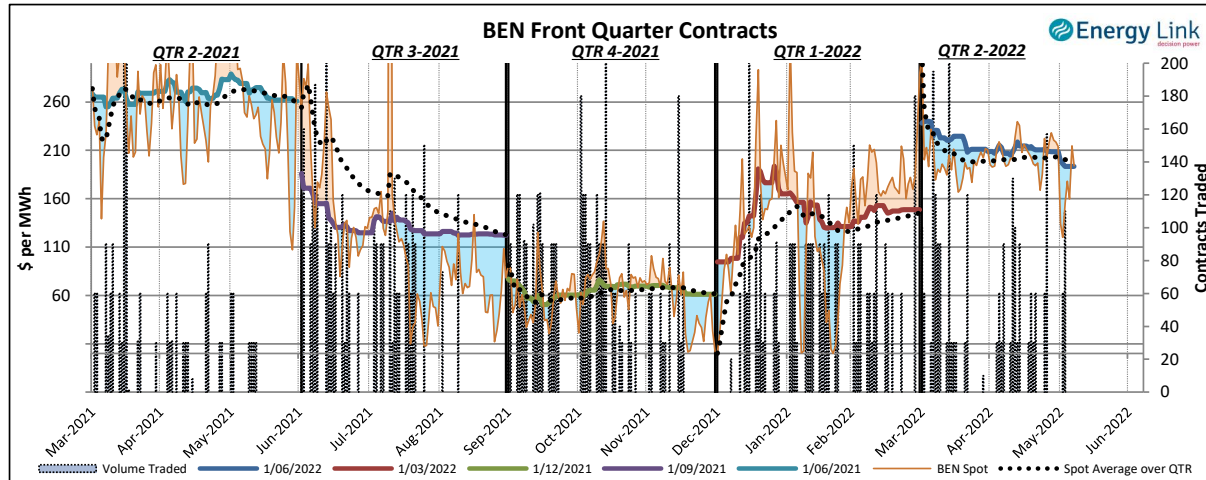
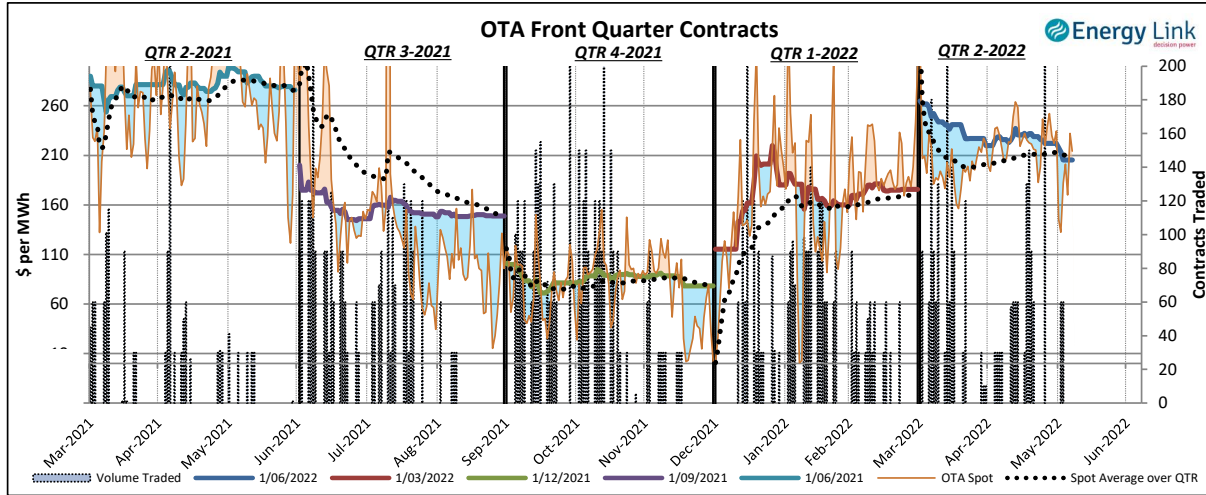


Demand data based on un-reconciled SCADA data.

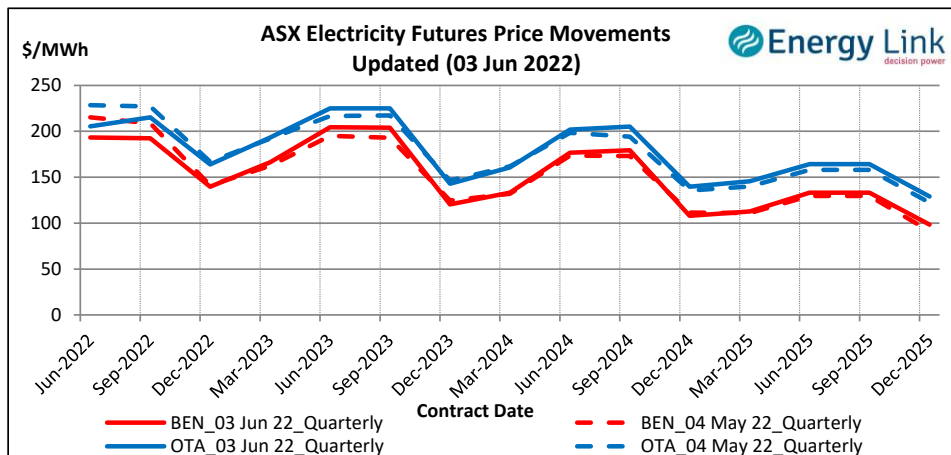
### ASX Electricity Futures

The Australian Securities Exchange (ASX) listed Base Load Electricity Futures, Strip Futures and Calendar year Strip Options for two grid reference points (Otauhu and Benmore) in the New Zealand electricity market in July 2009. The ASX New Zealand Electricity Futures contracts are cash settled using the arithmetic average of half-hourly prices at the designated node over the period of a calendar quarter.

The two charts below display the price movements of the front quarter futures contract during the current quarter and for the four quarters prior to the current quarter. Also shown is the volume of contracts traded, the relevant spot price and the spot average price over the quarter during the time when each contract was the front quarter contract.



The chart to the right shows the most recent transactions for all currently traded futures contracts at both the BEN & OTA nodes. For comparison these prices are mapped against the prices for the same contracts four weeks prior to the current Market Review.



### Carbon Dioxide Emissions

The chart below shows the estimated Carbon Dioxide (CO<sub>2</sub>) emissions for New Zealand's major thermal power stations. The estimates are based on weekly generation output and assumptions on each plant's thermal efficiency.

Note: Since 22 Feb 2016, Geothermal plant is now also included in the total carbon emissions.

